

# Brussels Sprouts

## **BS19-50 - Attis Brussels Sprouts Seeds**

107 days. Brassica oleracea. (F1) Attis Brussels Sprouts. This early maturing plant produces good yields of dark green Brussels Sprouts. This variety has heads average 1 to 1 ½" in diameter. Perfect for roasted, grilled, or steamed. Easy to harvest. An excellent choice for home gardens, farmer's markets, market growers, open production, and commercial production. A variety from the USA.



## **BS21-50 - Capitola Brussels Sprouts Seeds**

135 days. Brassica oleracea. (F1) Capitola Brussels Sprouts. The plant produces heavy yields of light green Brussels Sprouts. This high-quality variety has heads average 1 to 1 ½" in diameter. It is known for its uniform high-quality sprouts. Perfect for roasted, grilled, or steamed. It can be harvested either by hand or machine. Easy to harvest. Resist bolting. It is adaptable to all regions. An excellent choice for home gardens, farmer's markets, market growers, open production, and commercial production. A variety from the USA. Disease Resistant: FY.



## **BS4-500 - Catskill Improved Brussels Sprouts Seeds**

95 days. Brassica oleracea. Open Pollinated. Catskill Improved Brussels Sprouts. The plant produces very high yields of extra-large Brussels Sprouts. The heads average 1 to 2 inches in diameter. This variety has strong stalks and numerous small heads. Easy to pick. Good freezing variety. Excellent choice for home gardens. Developed in 1941 by Arthur White of Arkport, New York, USA. United States Department of Agriculture, PI 329203.



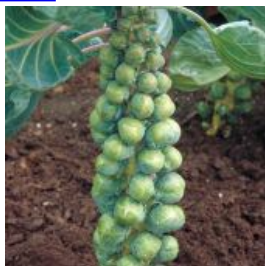
## **BS22-50 - Cobus Brussels Sprouts Seeds**

165 days. Brassica oleracea. (F1) Cobus Brussels Sprouts. This compact plant produces high yields of medium-green Brussels Sprouts. This variety has heads average 1 to 1 ½" in diameter. It is packed with an average of 70 sprouts per stalk. Perfect for roasted, grilled, or steamed. The sprouts are smooth and great tasting. By sowing in the summer, you can reap in the chilly months of September through December. It continuously produces a large number of excellent sprouts on sturdy tall plants. Easy to grow. Easy to harvest. An excellent choice for home gardens, farmer's markets, market growers, open production, and commercial production. A variety from the USA.



## **BS23-50 - Confidant Brussels Sprouts Seeds**

130 days. Brassica oleracea. (F1) Confidant Brussels Sprouts. The compact plant produces high yields of deep green Brussels Sprouts. This high-quality variety has heads average 1 to 1 ½" in diameter. The compact plant only grows 25" tall and is lined with 16-19 rows of sprouts. Perfect for roasted, grilled, or steamed. Resist bolting. An excellent choice for home gardens, farmer's markets, market growers, open production, and commercial production. A variety from the USA. Disease Resistant: FY.



## **BS18-50 - Cryptus Brussels Sprouts Seeds**

150 days. Brassica oleracea. (F1) Cryptus Brussels Sprouts. The plant produces high yields of green Brussels Sprouts. This high-quality variety has heads average 1 to 1 ½" in diameter. Perfect for roasted, grilled, or steamed. This late-maturing variety is perfect for November and December's harvest. Easy to grow. An excellent choice for home gardens, farmer's markets, market growers, open production, and commercial production. A variety from the USA. Disease Resistant: CR.



### **BS12-50 - Dagan Brussels Sprouts Seeds**

100 days. Brassica oleracea. (F1) Dagan Brussels Sprouts. The tall plant produces high yields of bright green Brussels Sprouts. The heads average 1 to 1 ½" in diameter. Perfect for roasted, grilled, or steamed. The sprouts are firm, smooth, and easy to pop off the stem. The leaves shed as the sprouts mature. The leaves shed at maturity leaving a nice, clean stalk. This is a very dependable early to midseason variety. Holds well in the field. It is adapted to a range of growing conditions and climates. Suitable for Northeast and Southeast main-season production. An excellent choice for home gardens, farmer's markets, market growers, open production, and commercial production. A variety from the USA.



### **BS10-50 - Divino Brussels Sprouts Seeds**

110 days. Brassica oleracea. (F1) Divino Brussels Sprouts. The tall plant produces good yields of dark green Brussels Sprouts. The heads average 1 inch in diameter. The sprouts are spaced further apart, allowing plants to dry out quickly to avoid the spread of disease and making it easier to harvest the sprouts. They also showed the least aphid damage. The flavor is outstanding and only gets better as the cool temperatures arrive. Excellent storage variety. The leaves shed at maturity leaving a nice, clean stalk. It will mature by Thanksgiving in most areas. It holds well on the stalk for the whole stalk harvest. Holds well in the field. An excellent choice for home gardens, farmer's markets, market growers, open production, and commercial production. A variety from the USA.



### **BS15-50 - Franklin Brussels Sprouts Seeds**

80 days. Brassica oleracea. (F1) Franklin Brussels Sprouts. This early-maturing plant produces high yields of blue-green Brussels Sprouts. This high-quality variety has heads average 1 to 1 ½" in diameter. Perfect for roasted, grilled, or steamed. The sprouts are smooth and great tasting. The stalks are less woody than other varieties making it easier to harvest. An excellent choice for home gardens, farmer's markets, market growers, open production, and commercial production. A variety from the USA.



### **BS17-50 - Gladius Brussels Sprouts Seeds**

98 days. Brassica oleracea. (F1) Gladius Brussels Sprouts. This early-maturing compact plant produces high yields of blue-green Brussels Sprouts. This high-quality variety has heads average 1 to 1 ½" in diameter. Perfect for roasted, grilled, or steamed. Excellent shelf life. Holds in the field well. Resists bolting. An excellent choice for home gardens, farmer's markets, market growers, open production, and commercial production. A variety from the USA.



### **BS8-25 - Hestia Brussels Sprouts Seeds**

#### **2015 All-America Selections Winner!**

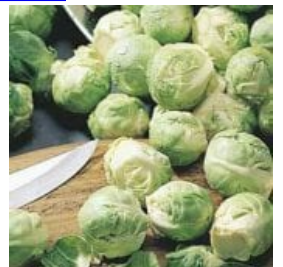
100 days. Brassica oleracea. (F1) Hestia Brussels Sprouts. The plant produces heavy yields of bright green Brussels Sprouts. The heads average 1 inch in diameter. The flavor is outstanding and only gets better as the cool temperatures arrive. One of only two Brussels Sprouts ever to win the AAS award! Cold Tolerant. Heat Tolerant. It's ideal for a wide range of climates. It holds well in the field too. An excellent choice for home gardens.



### **BS2-100 - Jade Cross Brussels Sprouts Seeds**

#### **1959 All-America Selections Winner!**

80 days. Brassica oleracea. (F1) Jade Cross Brussels Sprouts. The plant produces heavy yields of solid Brussels Sprouts. The heads average 1 ½ to 2 inches in diameter. Excellent freezing variety. One of the earliest Brussels Sprouts for the short growing season. An excellent choice for home gardens.



#### **BS3-500 - Long Island Improved Brussels Sprouts Seeds**

90 days. Brassica oleracea. Open Pollinated. Long Island Improved Brussels Sprouts. The plant produces heavy yields of round dark green flavorful Brussels Sprouts. The heads average 1 ½ to 2 inches in diameter. Excellent flavor, very delicious. Superior freezing variety. An excellent choice for home gardens and market growers. This variety originated around the 1890s. United States Department of Agriculture, NSL 6900.



#### **BS13-50 - Marte Brussels Sprouts Seeds**

100 days. Brassica oleracea. (F1) Marte Brussels Sprouts. The plant produces high yields of blue-green Brussels Sprouts. This high-quality variety has heads average 1 to 1 ½" in diameter. Perfect for roasted, grilled, or steamed. The sprouts are smooth and great tasting. Awarded the RHS Award of Garden Merit. It is widely adaptable and suitable for warmer climates than traditional sprout production areas. Heat Tolerant. An excellent choice for home gardens, farmer's markets, market growers, open production, and commercial production. A variety from the USA. Disease Resistant: FY.



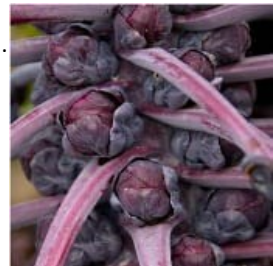
#### **BS6-50 - Nautic Brussels Sprouts Seeds**

120 days. Brassica oleracea. (F1) Nautic Brussels Sprouts. The plant produces heavy yields of bright green Brussels Sprouts. The heads average 1 inch in diameter. They are tender and sweet, especially after fall's frosts. The sprouts are spaced further apart, allowing plants to dry out quickly to avoid the spread of disease and making it easier to harvest the sprouts. They also showed the least aphid damage. The flavor is outstanding and only gets better as the cool temperatures arrive. Easy to harvest. Cold Tolerant. An excellent choice for home gardens. Disease Resistant: BL, BR, FY, PM.



#### **BS11-250 - Red Bull Brussels Sprouts Seeds**

85 days. Brassica oleracea. Open Pollinated. Red Bull Brussels Sprouts. The plant produces high yields of dark red Brussels Sprouts. The heads average 1 to 1 ½" in diameter. They have a milder, nuttier flavor than standard green types and are very flavorful. It keeps its dark red color well when cooked, steamed, or microwaved. The color improves with colder weather. Cold Tolerant. The plants are ornamental enough for flower borders. Also known as Red Ball Brussels Sprouts. Excellent choice for home gardens.



#### **SS4-200 - Red Clover Sprouting Seeds**

4 to 6 days. Trifolium pratense. Open Pollinated. Red Clover Sprouting Seeds. The plant produces excellent quality delicious Red Clover Sprouts. The sprouts have a mildly sweet flavor and delicate crunch. Red clover sprouts are healthy and low-calorie. One of the very best sources of vitamins besides the Vitamin B complex. High in vitamins Vitamin D, Vitamin C, and Vitamin E. Excellent in salads, soups, sandwiches, and other Asian dishes. One tablespoon of seed yields approximately 3 to 4 cups of sprouts. A variety from the USA.



#### **BS14-25 - Redarling Brussels Sprouts Seeds**

140 days. Brassica oleracea. (F1) Redarling Brussels Sprouts. The plant produces high yields of reddish-purple Brussels Sprouts. This variety has heads average 1 to 1 ½" in diameter. Perfect for roasted, grilled, or steamed. They have a wonderful mild flavor that really comes out when roasted or sautéed. These beautiful colored purple-red sprouts are sure to get attention in the garden and on dinner plates. Perfect for gourmet dishes. High in Vitamins A and C. Suitable for early spring or summer planting as you can start harvesting in November and continue well into March. These phenomenal plants stood in prime condition in the open field for 4 months! Cold Tolerant. Easy to grow. Easy to harvest. An excellent choice for home gardens, farmer's markets, market growers, open production, and commercial production. A variety from the USA.



### **BS20-50 - Scorpius Brussels Sprouts Seeds**

112 days. Brassica oleracea. (F1) Scorpius Brussels Sprouts. The plant produces high yields of light green Brussels Sprouts. This variety has heads average 1 to 1 ½" in diameter. Perfect for roasted, grilled, or steamed. The sprouts are easy to snap off the stalk and the leaves shed well making it easy to harvest. An excellent choice for home gardens, farmer's markets, market growers, open production, and commercial production. A variety from the USA.



### **BS16-50 - Silvia Brussels Sprouts Seeds**

98 days. Brassica oleracea. (F1) Silvia Brussels Sprouts. This early-maturing compact plant produces high yields of green Brussels Sprouts. This high-quality variety has heads average 1 to 1 ½" in diameter. The compact plant only grows 24" tall. They may be short but they are packed with 45-50 sprouts per stalk. Perfect for roasted, grilled, or steamed. The sprouts are smooth and great tasting. High in Vitamins A and C. For the best flavor, harvest after the first fall frost. It is a great choice for tight spaces and small gardens. An excellent choice for home gardens, farmer's markets, market growers, open production, and commercial production. A variety from the USA. Disease Resistant: BR, FY.

