

V - Verticillium Wilt Resistant Tomatoes

TM920-20 - 42 Day Tomato Seeds

42 days. *Solanum lycopersicum*. Open Pollinated. 42 Day Tomato. This early maturing plant produces high yields of 1 oz bright red cherry tomatoes. These cherry tomatoes are very sweet. One of the world's earliest tomatoes. Great in salads, vegetable platters, and on toothpicks as appetizers. The plant does well in both cool and warm climates. They have very few seeds. Suitable for containers. You can be the first in your neighborhood with ripe tomatoes! Suitable for home gardens. A variety from Mexico. Determinate. Disease Resistant: F, N, FCRR, TMV, V.



TM294-20 - Abraham Lincoln Tomato (Improved)

75 days. *Solanum lycopersicum*. (F1) The plant produces high yields of 8 to 10 oz globe-shaped tomatoes. They are very sweet, meaty, juicy, and flavorful. Perfect for making ketchup, tomato juice, sandwiches, salads, slicing, and canning. This cross-bred variety combines the heirloom variety with the early maturity variety. It is one of America's highest-yielding varieties. An excellent choice for home gardens and market growers. Disease Resistant: V, F, N, A, St. Indeterminate.



TM259-20 - Ace 55 Tomato Seeds

75 days. *Solanum lycopersicum*. Open Pollinated. Ace 55 Tomato. The plant produces high yields of large 12 to 14 oz bright red tomatoes. They have few seeds and are very sweet, meaty, juicy, and flavorful. Perfect for sandwiches, salads, and slicing. Resists cracking, bruising, and bursting. Low acidity variety. The plant has good foliage protecting tomatoes from sunscald. An excellent choice for home gardens and market growers. A 1950 heirloom variety developed in the USA. United States Department of Agriculture, PI 212423. Disease Resistant: V, F, A. Determinate.



TM643-20 - Amarillo Tomato

75 days. *Solanum lycopersicum*. (F1) The plant produces good yields of ½ oz golden yellow cherry tomatoes. They are very sweet and flavorful. Perfect for salads and fresh use. Grows in clusters of 20 to 80. This variety can be grown in the greenhouse or open field. Excellent choice for home gardens, greenhouses, market growers, and open field production. Disease Resistant: V, FF, TMV. Indeterminate.



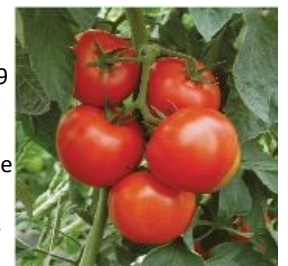
TM477-10 - Amelia Tomato

75 days. *Solanum lycopersicum*. (F1) The plant produces heavy yields of large 8 to 12 oz red tomatoes. They are very flavorful, firm, and uniform in shape. Perfect for sandwiches, salads, and slicing. It produces a lot of tomatoes, from 20 to 30 pounds per plant. Crack-Resistant. Does well in the Southeast region of the USA. Suitable for containers. An excellent choice for home gardens, market growers, and open field production. Disease Resistant: V, FFF, N, St, TSWV. Determinate.



TM495-10 - Arbason Tomato

76 days. *Solanum lycopersicum*. (F1) The plant produces high yields of flavorful 7 to 9 oz red beefsteak tomatoes. It is very delicious and juicy. Perfect for sandwiches, salads, and slicing. Crack Resistant. Suitable for greenhouse production. An excellent choice for home gardens, farmer's markets, market growers, greenhouses, open production, and commercial production. Disease Resistant: V, FF, TMV. Indeterminate.



TM644-20 - Armando Tomato

72 days. *Solanum lycopersicum*. (F1) This early maturing plant produces good yields of red saladette tomatoes. They have dense thick flesh, and are firm, and flavorful. Perfect for salads. Excellent choice for home gardens, greenhouses, market growers, and open field production. Disease Resistant: V, FF, N, TMV. Indeterminate.



TM419-20 - Atkinson Tomato

70 day. *Solanum lycopersicum*. Open Pollinated. This early maturing plant produces good yields of large 8 to 16 oz light red tomatoes. They are meaty and flavorful. It has a rich old-fashioned, tomato flavor. Perfect for salads, sandwiches, slicing, and canning. The plant has heavy foliage which provides protection. Ideal for growing in southern regions under hot and humid conditions. An excellent choice for home gardens and market growers. Developed in 1966 by Auburn University, Alabama, USA. United States Department of Agriculture, PI 645267. Disease Resistant. V, N. Indeterminate.



TM418-10 - Baby Cakes Tomato Seeds

70 days. *Solanum lycopersicum*. (F1) Baby Cakes Tomato. This early maturing plant produces heavy yields of 1 to 1 ½" diameter red cherry tomatoes. It tastes like a classic tomato. Perfect for eating fresh right off the vine or in salads. Crack Resistant. It can be grown in either open-field culture or on short stakes. Excellent choice for home gardens, market growers, and open field production. Disease Resistant: V, FF, TMV, TSWV. Determinate.



TM350-10 - Basket Vee Tomato

70 days. *Solanum lycopersicum*. Open Pollinated. This early maturing bush-type plant produces high yields of 8 to 9 oz red tomatoes. They have thick flesh and are very flavorful. Perfect for sandwiches, salads, and slicing. Crack-Resistant. An excellent choice for home gardens and market growers. A variety developed in Canada. Disease Resistant: V, F. Determinate.



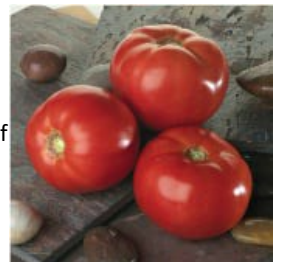
TM8-20 - Beefmaster Tomato

80 days. *Solanum lycopersicum*. (F1) The plant produces enormous yields of large 1 to 2 lb bright red beefsteak tomatoes. These high-quality tomatoes are sweet, meaty, and very flavorful. Perfect for sandwiches, salads, and slicing. The plant requires support, either staking or cages. Crack Resistant. One of the most disease-resistant tomato varieties available. An excellent choice for home gardens and market growers. Disease Resistant: V, F, N, A, St, TSWV. Indeterminate.



TM478-10 - Bella Rosa Tomato

75 days. *Solanum lycopersicum*. (F1) The plant produces high yields of 9 to 12 oz bright red tomatoes. They are round, firm, and highly flavorful. It has a good balance of acid and sugar. Perfect for sandwiches, salads, and slicing. A heat-tolerant variety that does well in Florida. One of the most disease-resistant tomato varieties. An excellent choice for home gardens and market growers. Disease Resistant: V, FF, N, A, St, TSWV. Determinate.



TM10-20 - Better Boy Tomato Seeds

75 days. *Solanum lycopersicum*. (F1) Better Boy Tomato. The plant produces extremely heavy yields of 10 to 16 oz bright red tomatoes. It has a rich old fashioned tomato flavor. It is very meaty, juicy, and flavorful with just the right balance of acid and sugar. It is one of the most popular tomatoes grown in the United States and one of the all time best sellers. One of the most disease resistant tomato varieties. Home gardeners have voted Better Boy Tomato as one of the Best Tomatoes to Grow. It is a Guinness World Record holder for the highest-yielding tomato, producing 342 lbs of tomatoes from one plant. The plant continues to produce all season long. Perfect for slicing, freezing, canning, and sauces. Good foliage protection prevents sun scaling. The plant requires support, either staking or cages. An excellent choice for home gardens and market growers. Disease Resistant: V, F, N, A, St, LB. Indeterminate.



TM283-20 - Better Bush Tomato Seeds

68 day. *Solanum lycopersicum*. (F1) Better Bush Tomato. This early maturing bush type plant produces good yields of 8 oz red tomatoes. They are very sweet and meaty. It has a rich old fashioned tomato flavor. Perfect for sandwiches, salads, and slicing. This variety has a strong central stem capable of supporting 48" height with very little need for staking. One of the finest bush varieties on the market. Suitable for large containers or small gardens. Also a favorite choice for growing on patios, decks, and balconies. An excellent choice for home gardens and market growers. Disease Resistant: V, F, N. Determinate.



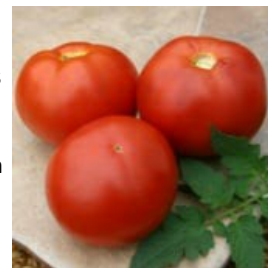
TM602-10 - BHN 589 Tomato Seeds

75 days. *Solanum lycopersicum*. (F1) BHN 589 Tomato. The plant produces high yields of 8 to 10 oz red tomatoes. This is the first BHN variety bred especially for great flavor with a real tomato taste. Perfect for sandwiches, salads, and slicing. Crack Resistant. Good shelf life. Suitable for hoop houses or greenhouses. An excellent choice for home gardens and market growers. Disease Resistant: V, FF, TMV. Determinate.



TM592-10 - BHN 602 Tomato Seeds

77 days. *Solanum lycopersicum*. (F1) BHN 602 Tomato. The plant produces high yields of 10 to 12 oz bright red tomatoes. It has outstanding flavor. Perfect for sandwiches, salads, and slicing. Growers in the Southern States will be able to grow healthy crops using this variety. Recommended for all areas, especially for Alabama, Arkansas, Georgia, Florida, Louisiana, Mississippi, North Carolina, and South Carolina. Produces 40 to 80 tomatoes per plant. An excellent choice for home gardens and market growers. Disease Resistant: V, FFF, TSWV. Determinate. **(Pelleted Seeds)**



TM915-10 - Big Beef Plus Tomato Seeds

72 days. *Solanum lycopersicum*. (F1) Big Beef Plus Tomato. The plant produces good yields of very flavorful 12 to 16 oz red beefsteak tomatoes. The best all around beefsteak tomato yet developed. Just like the Big Beef Tomato, it has improved its rich old fashioned tomato flavor. It is very juicy and sweeter than the original Big Beef. Perfect for sandwiches, salads, and slicing. One of the most disease resistant tomato varieties. Crack Resistant. Heat Tolerant. An excellent choice for home gardens. Disease Resistant: V, F, FF, N, A, ALS, St, LB, TMV, TSWV. Indeterminate.



TM11-10 - Big Beef Tomato Seeds

1994 All-America Selections Winner!
73 days. *Solanum lycopersicum*. (F1) Big Beef Tomato. This early maturing plant produces good yields of very flavorful 12 to 16 oz red beefsteak tomatoes. The best all around beefsteak tomato yet developed. It has a rich old fashioned tomato flavor and is very juicy. Perfect for sandwiches, salads, and slicing. One of the most disease-resistant tomato varieties. Crack Resistant. Heat Tolerant. An excellent choice for home gardens. Disease Resistant: V, FF, N, A, St, LB, TMV. Indeterminate.



TM764-20 - Big Daddy Tomato

78 days. *Solanum lycopersicum*. (F1) The plant produces high yields of 12 to 15 oz red beefsteak tomatoes. It is very meaty and flavorful with a rich sweet flavor. Perfect for sandwiches, salads, and slicing. A hybrid variety developed from the Big Boy tomato with improved disease resistance. An excellent choice for home gardens. Disease Resistant: V, F. Indeterminate.



TM513-10 - Biltmore Tomato

80 days. *Solanum lycopersicum*. (F1) The plant produces high yields of 8 to 10 oz red tomatoes. This variety has a great tomato flavor! Perfect for sandwiches, salads, and slicing. Crack Resistant. Excellent choice for home gardens and market growers. Disease Resistant: V, FF, A, St. Determinate.



TM945-10 - Bobcat Tomato Seeds

68 days. *Solanum lycopersicum*. (F1) Bobcat Tomato. This early maturing plant produces high yields of 10 oz shiny red tomatoes. Great tomato flavor with the right balance of sugars and acids. They have smooth skin and are very sweet, meaty, and juicy. Perfect for sandwiches, salads, and slicing. It is a sister of the Better Bush Tomato. The plant has dense foliage that provides excellent protection to the fruit. Suitable for large patio containers. An excellent choice for home gardens, farmer's markets, market growers, open production, and commercial production. Disease Resistant: F, FF, V, St, TMV. Determinate.



TM17-20 - Bonny Best Tomato

72 days. *Solanum lycopersicum*. Open Pollinated. This early maturing plant produces heavy yields of 8 to 10 oz red tomatoes. It has the rich old-fashioned tomato flavor and is often judged as one of the 5 best tasting tomatoes! They are solid and meaty. It became one of the most respected canning varieties in America in the first half of the twentieth century. Also great for sandwiches, salads, slicing, salsas, and sauces. Suitable for Northern regions. Grows in clusters of 6 to 8 tomatoes. An excellent choice for home gardens, market growers, and open field production. An heirloom variety from the USA. United States Department of Agriculture, PI 639208. Disease Resistant: V, F, N. Indeterminate.



TM569-20 - BrandyMaster Pink Tomato Seeds

80 days. *Solanum lycopersicum*. (F1) BrandyMaster Pink Tomato. The plant produces good yields of 10 to 16 oz shiny pink beefsteak tomatoes. They are firm, juicy, and have a rich tomato flavor. This is a strain of the famous Brandywine varieties. The plant does well under a wide range of weather conditions. A potato leaf variety. An excellent choice for home gardens. Disease Resistant: V, F, N. Indeterminate.



TM570-20 - BrandyMaster Red Tomato Seeds

80 days. *Solanum lycopersicum*. (F1) BrandyMaster Red Tomato. The plant produces good yields of 10 to 16 oz shiny red beefsteak tomatoes. They are firm, juicy, and have a rich tomato flavor. This is a strain of the famous Brandywine varieties. The plant does well under a wide range of weather conditions. A potato leaf variety. Excellent choice for home gardens. Disease Resistant: V, F, N. Indeterminate.



TM571-20 - BrandyMaster Yellow Tomato

80 days. *Solanum lycopersicum*. (F1) The plant produces good yields of 10 to 16 oz shiny yellow beefsteak tomatoes. They are firm, juicy, and have a rich tomato flavor. This is a strain of the famous Brandywine varieties. The plant does well under a wide range of weather conditions. A potato leaf variety. Excellent choice for home gardens. Disease Resistant: V, F, N. Indeterminate.



TM882-10 - Brenda Tomato Seeds

80 days. *Solanum lycopersicum*. (F1) Brenda Tomato. The plant produces high yields of 4 to 4 ½ oz red Roma-type tomatoes. It is very flavorful and perfect for salads. The plant is very strong and vigorous and has good foliage protecting tomatoes from sun-scald. An excellent choice for home gardens, market growers, and open field production. Disease Resistance: V, FF, TMV, TSWV, TYLCV. Determinate.



TM582-20 - Bush Early Girl II Tomato Seeds

54 days. *Solanum lycopersicum*. (F1) Bush Early Girl II Tomato. This early maturing bush type plant produces huge yields of 6 to 7 oz red tomatoes. They are firm, meaty, very flavorful, and larger than its sister Early Girl. Perfect for salsa, salads, and cooking. Perfect for container gardening, patios, or small gardens where space is very limited! They are amazingly compact and self-supporting. Plant produce heavy yields averaging 100 tomatoes or more from each plant. An excellent choice for home gardens. Disease Resistant: VFFN, TMV. Determinate.



TM351-20 - Cal Ace Tomato

85 days. *Solanum lycopersicum*. Open Pollinated. The plant produces good yields of large 8 to 16 oz red beefsteak tomatoes. They are meaty, sweet, and very flavorful. Perfect for sandwiches, salads, and slicing. This variety produces earlier than the Ace variety. Heat Tolerant. Suitable for California tomato production. An excellent choice for home gardens, greenhouses, market growers, and open field production. An heirloom variety dating back to 1970. United States Department of Agriculture, NSL 187041. Disease Resistant: V, F, A. Determinate.



TM421-20 - Calypso Tomato

75 day. *Solanum lycopersicum*. Open Pollinated. The plant produces good yields of 7 oz red tomatoes. Perfect for salads, sandwiches, slicing, and canning. Ideal for growing in southern regions, under humid conditions. An excellent choice for home gardens and market growers. Disease Resistant: V, FF, A. Indeterminate.



TM432-20 - Campbell 33 Tomato Seeds

69 days. *Solanum lycopersicum*. Open Pollinated. Campbell 33 Tomato. This early maturing plant produces good yields of 7 to 10 oz bright red tomatoes. Perfect for making homemade tomato soup. Also great for sandwiches, salads, and slicing. Crack Resistant. It does well under adverse weather conditions. Excellent canning processing variety. An excellent choice for home gardens, market growers, and open field production. An heirloom variety. Disease Resistant: V, F, A. Determinate.



TM433-20 - Caribe Tomato

85 days. *Solanum lycopersicum*. Open Pollinated. The plant produces good yields of 8 oz red tomatoes. Perfect for sandwiches, salads, and slicing. Does well in humid regions. Good shipping variety. Suitable for container gardening. An excellent choice for home gardens and market growers. Disease Resistant: V, FF, A. Determinate.



TM762-20 - Carmello Tomato

75 days. *Solanum lycopersicum*. (F1) The plant produces heavy yields of 10 to 12 oz bright red tomatoes. They have a rich sweet flavor. Perfect for sandwiches, salads, and slicing. It is among the most productive tomatoes ever bred. Grows in clusters on strong plants. Crack Resistant. Excellent choice for home gardens and market growers. A variety from France. Disease Resistant: V, F, N, TMV, ToMV. Indeterminate



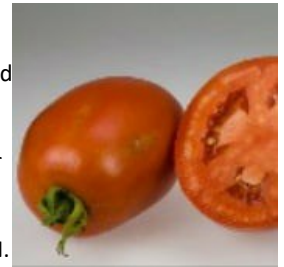
TM29-20 - Carolina Gold Tomato

75 days. *Solanum lycopersicum*. (F1) The plant produces high yields of 8 to 10 oz golden-yellow tomatoes. They are firm, meaty, sweet, and very flavorful. Perfect for salads and garnishes. Low acidity variety. Developed for the Southeast regions and high-elevation areas. It grows well everywhere! The plant requires support, either staking or cages. Good shipping variety. An excellent choice for home gardens and market growers. Disease Resistant: V, FF, St, GW. Determinate.



TM387-20 - Casa del Sol Tomato

69 days. *Solanum lycopersicum*. (F1) This early maturing compact plant produces good yields of 6 oz red plum tomatoes. They are very flavorful. Perfect for salads and garnishes. Good shipper variety! Perfect for small gardens where space is very limited! Excellent choice for home gardens and market growers. Disease Resistant: V, FF, N. Determinate.



TM913-10 - Celebrity Plus Tomato Seeds

70 days. *Solanum lycopersicum*. (F1) Celebrity Plus Tomato. This early maturing plant produces heavy yields of 7 to 10 oz bright red tomatoes. They grow in clusters and are smooth, firm, meaty, and very flavorful. The Celebrity Plus Tomato has the characteristics of the Celebrity Tomato but with improved disease resistance. Perfect for sandwiches, salads, and slicing. Also great for making tomato juice and tomato sauce. Suitable for canning and freezing too! The Celebrity tomato plant is as close to perfect as you can get! One of the most disease resistant tomato varieties. The plant has strong vines and does extremely well in most regions. Crack Resistant. To maximize yield potential, either stake or use cages. An excellent choice for home gardens and market growers. Disease Resistant: V, FF, N, T, A, St, TMV, TSWV. Semi-Determinate.



TM916-10 - Celebrity Supreme Tomato Seeds

77 days. *Solanum lycopersicum*. (F1) Celebrity Supreme Tomato. The plant produces heavy yields of 8 to 12 oz bright red tomatoes. They grow in clusters and are smooth, firm, meaty, and very flavorful. The Celebrity Supreme Tomato has the characteristics of the Celebrity Tomato, but with improved disease resistance. Perfect for sandwiches, salads, and slicing. Also great for making tomato juice and tomato sauce. Suitable for canning and freezing too! The Celebrity Supreme tomato plant is as close to perfect as you can get! One of the most disease-resistant tomato varieties. The plant has strong vines and does extremely well in most regions. Crack Resistant. To maximize yield potential, either stake or use cages. An excellent choice for home gardens and market growers. Disease Resistant: V, FF, N, T, A, St, TMV, TSWV. Semi-Determinate.



TM32-10 - Celebrity Tomato Seeds

1984 All-America Selections Winner!

72 days. *Solanum lycopersicum*. (F1) Celebrity Tomato. This early maturing plant produces heavy yields of 7 to 8 oz bright red tomatoes. They grow in clusters and are smooth, firm, meaty, and very flavorful. Perfect for sandwiches, salads, and slicing. Also great for making tomato juice and tomato sauce. Suitable for canning and freezing too! The Celebrity tomato plant is as close to perfect as you can get! One of the most disease-resistant tomato varieties. The plant has strong vines and does extremely well in most regions. Crack Resistant. To maximize yield potential, either stake or use cages. An excellent choice for home gardens and market growers. Disease Resistant: V, FF, N, A, St, TMV. Determinate.



TM584-10 - Champion II Tomato

65 days. *Solanum lycopersicum*. (F1) This early maturing plant produces high yields of 6 to 8 oz red tomatoes. Perfect for sandwiches, salads, and slicing. It has the same desirable qualities and flavor as the original Champion Tomato with even more disease resistance. Heat Tolerant. Excellent choice for home gardens and market growers. Disease Resistant: V, FF, N, A, TMV, TYLCV. Indeterminate.



TM787-20 - Charger Tomato

72 days. *Solanum lycopersicum*. (F1) This early maturing plant produces high yields of 10 to 14 oz brilliant red tomatoes. Perfect for sandwiches, salads, salsas, and slicing. They adapt to a large range of climates and temperatures. Crack Resistant. High quality tomatoes are used for commercial production. An excellent choice for home gardens, farmer's markets, market growers, open production, and commercial production. Disease Resistant: V, FFF, A, St, TYLCV. Determinate.



TM845-20 - Chef's Choice Pink Tomato

2015 All-America Selections Winner!

80 days. *Solanum lycopersicum*. (F1) The plant produces high yields of large 12 to 14 oz pink beefsteak tomatoes. Perfect for stewing, canning, or eating fresh in salads and sandwiches. Crack Resistant. A potato leaf variety. Excellent choice for home gardens. Disease Resistance: V, A, N, St, ToMV. Indeterminate.



TM748-10 - Cherokee Chocolate Tomato

80 days. *Solanum lycopersicum*. Open Pollinated. The plant produces high yields of 10 to 16 oz brownish-red mahogany beefsteak tomatoes. They grow in clusters of 2 to 4 tomatoes. It has a rich old-fashioned tomato flavor. It is tastier, juicier, and more productive than its sister variety, the Cherokee Purple Tomato. A cross between using the Cherokee Purple tomato and an heirloom variety. Perfect for sandwiches, salads, and slicing. The plant requires support, either staking or cages. An excellent choice for home gardens. An heirloom was developed in 1995 by Craig LeHoullier of Tennessee, USA. Disease Resistant: V, F. Indeterminate.



TM423-20 - Chico III Tomato

70 days. *Solanum lycopersicum*. Open Pollinated. This early maturing plant produces high yields of 3 to 4 oz red plum-shaped tomatoes. Perfect for salads and canning. Also, an excellent processing variety is used to make sauces and puree. A variety is suitable for commercial production. Heat Tolerant. Excellent choice for home gardens, market growers, and open field production. Disease Resistant: V, FF. Determinate.



TM394-10 - Cobra Tomato

70 days. *Solanum lycopersicum*. (F1) This early maturing plant produces heavy yields of large 6 to 8 oz ruby red tomatoes. Very flavorful. Perfect for sandwiches, salads, slicing, and canning. It is the best-tasting greenhouse variety on the market. This is a special high-quality greenhouse variety that grows in clusters of 6 to 8. It is suitable for both greenhouse and open field production. Crack Resistant. For best results, prune the plants to 1 or 2 leaders. An excellent choice for home gardens, greenhouses, market growers, and open field production. Disease Resistant: V, FF, St, TMV. Indeterminate.



TM193-20 - Colonial Tomato

76 days. *Solanum lycopersicum*. (F1) Plant produces good yields of 7 to 8 oz red tomatoes. They are firm and very flavorful. Perfect for sandwiches, salads, and slicing. Excellent choice for home gardens and market growers. Disease Resistant: V, FF, A, St. Determinate.



TM919-20 - Containers Choice Red Tomato

70 days. *Solanum lycopersicum*. (F1) This early maturing plant produces excellent yields of 8 oz red beefsteak tomatoes. It ripens to a bright red when mature. This wonderful space-saving container variety has unique wrinkled leaves. Suitable for containers and small gardens. An excellent choice for home gardens. Determinate. Disease Resistant: V, FF.



TM472-20 - Country Taste Tomato

70 days. *Solanum lycopersicum*. (F1) This early maturing plant produces high yields of large 1 lb deep red beefsteak tomatoes. They are meaty, juicy, and very flavorful. It has a rich old-fashioned tomato flavor. Perfect for sandwiches, salads, slicing, and sauces. One of the best beefsteak varieties on the market. Crack Resistant. An excellent choice for home gardens and market growers. Disease Resistant: V, FF, TMV. Indeterminate.



TM851-10 - Defiant Tomato

70 days. *Solanum lycopersicum*. (F1) This early maturing plant produces high yields of 6 to 8 oz bright red round tomatoes. Perfect for sandwiches, salads, and slicing. This tomato surpasses all other tomatoes being the first tomato bred for Early Blight and Late Blight while maintaining the old-fashioned tomato flavor. An excellent choice for home gardens and market growers. Disease Resistant: V, FF, EB, LB. Determinate.



TM890-10 - Dixie Red Tomato Seeds

85 days. *Solanum lycopersicum*. (F1) Dixie Red Tomato. The plant produces high yields of large 8 to 12 oz red tomatoes. Perfect for sandwiches, salads, slicing, and canning. This open-field production variety has a good leaf canopy for sunburn protection and can be used for green ripening. Dixie Red tomato plant will help growers get more fruit out of their fields. It is recommended that you do not prune the plant. The plant will set even in hot conditions. Heat Tolerant. One of the most disease-resistant tomato varieties. Suitable for commercial production in the Southeast. An excellent choice for home gardens, farmer's markets, market growers, open production, and commercial production. This variety is protected by the Plant Variety Protection Act, #9000179. United States Department of Agriculture, PI 674766 PVPO. Disease Resistant: V, FFF, N, A, St, TSWV. Determinate.



TM42-10 - Dona Tomato Seeds

75 days. *Solanum lycopersicum*. Open Pollinated. Dona Tomato. The plant produces good yields of 6 to 8 oz glossy red tomatoes. This variety has a perfect acid sugar ratio balance and is very flavorful. It is meaty and has very few seeds. Perfect for sandwiches, salads, and slicing. An excellent choice for home gardens. A variety from France. Disease Resistant: V, FF, N, TMV. Indeterminate.



TM752-20 - Early Doll Tomato Seeds

55 days. *Solanum lycopersicum*. (F1) Early Doll Tomato. This early variety produces heavy yields of 4 to 5 oz bright red tomatoes. They have excellent flavor. Perfect for sandwiches, salads, slicing, and salsa. Every home garden should have an early maturing tomato and this is one you must try! Excellent choice for home gardens. Disease Resistant: V, F. Determinate.



TM160-20 - Early Girl Tomato Seeds

52 days. *Solanum lycopersicum*. (F1) Early Girl Tomato. This early maturing plant produces heavy yields of flavorful 4 to 6 oz red tomatoes. They are meaty with incredible flavor and aroma. Perfect for sandwiches, salads, and slicing. High in Vitamin A and C. One of the earliest slicing tomatoes on the market. Produces very heavy yields averaging 300 tomatoes from each plant! To maximize yield potential, either stake or use cages. The plant keeps bearing heavily throughout the summer. Heat Tolerant. Excellent choice for home gardens and market growers. Disease Resistant: V, FF. Indeterminate.



TM43-10 - Early Pick Tomato Seeds

62 days. *Solanum lycopersicum*. (F1) Early Pick Tomato. This early maturing plant produces good yields of 8 to 16 oz scarlet red beefsteak tomatoes. It has a rich old-fashioned tomato flavor. Perfect for sandwiches, salads, and slicing. This variety can set fruit in a wide range of temperatures. The plant produces well with low night temperatures and West Coast weather. Plants produce bumper crops all summer. An excellent choice for home gardens and market growers. Disease Resistant: V, F. Indeterminate.



TM488-20 - Empire Tomato

72 days. *Solanum lycopersicum*. (F1) This early maturing plant produces high yields of 8 to 11 oz red tomatoes. Perfect for sandwiches, salads, and slicing. This is a main crop high-quality variety that grows well in the mid-Atlantic region and Northeast region. Crack Resistant. Excellent choice for home gardens, market growers, and open field production. Disease Resistant: V, F, N, A, St. Determinate.



TM45-20 - Fantastic Tomato

70 days. *Solanum lycopersicum*. (F1) This early maturing plant produces heavy yields of 4 to 7 oz red tomatoes. They are meaty, solid, and rich in beefsteak flavor. Perfect for sandwiches, salads, slicing, and canning. Crack Resistant. Excellent choice for home gardens and market growers. Disease Resistant: V, F, A. Indeterminate.



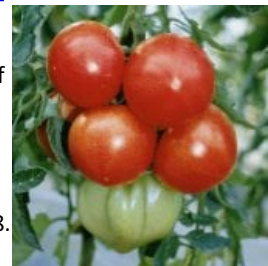
TM585-20 - Fantom Tomato

70 days. *Solanum lycopersicum*. (F1) This early maturing plant produces good yields of 7 oz bright red tomatoes. It is extra firm and very flavorful. Perfect for salsa, salads, and cooking. A great storage variety. It maintains its delicate taste and flavor for months - even until Christmas! Grows well in most conditions even in those hard-to-grow places! Excellent choice for home gardens and market growers. Disease Resistant: V, FF. Determinate.



TM817-20 - Fireball Improved Tomato

65 days. *Solanum lycopersicum*. (F1) This early maturing plant produces high yields of large pink tomatoes. They are very sweet and flavorful. Perfect for sandwiches, salads, and slicing. Excellent choice for home gardens and market growers. United States Department of Agriculture, PI 270228. Disease Resistant: V, F, N, LM. Indeterminate.



TM373-20 - First Prize Tomato Seeds

75 days. *Solanum lycopersicum*. (F1) First Prize Tomato. The plant produces high yields of large 10 to 12 oz red tomatoes. They are very flavorful. Perfect for sandwiches, salads, and slicing. The plant continues to bear tomatoes over a long season. Excellent choice for home gardens. Disease Resistant: V, FF, N, TMV. Indeterminate.



TM486-10 - Florida 47 Tomato

75 days. *Solanum lycopersicum*. (F1) The plant produces heavy yields of 10 oz red tomatoes. Perfect for sandwiches, salads, slicing, canning, and making tomato juice. It was developed for main crop commercial production. Plants thrive in hot, humid, tropical climates. The plants have excellent foliage for tomato cover. Great shipper variety. Heat Tolerant. High Humidity Tolerant. An excellent choice for home gardens, market growers, and open field production. Disease Resistant: V, F, A, St. Determinate.



TM484-20 - Florida 91 Tomato Seeds

90 days. *Solanum lycopersicum*. (F1) Florida 91 Tomato. The plant produces good yields of 9 to 11 oz red tomatoes. Perfect for sandwiches, salads, and slicing. A heat tolerant variety. It was developed for main crop production. It can set fruit even in the intense summer heat. Crack Resistant. Heat Resistant. Excellent choice for home gardens, market growers, and open field production. Disease Resistant: V, FF, A, St. Determinate.



TM769-10 - Fresh Salsa Tomato Seeds

65 days. *Solanum lycopersicum*. (F1) Fresh Salsa. This early maturing plant produces high yields of 4 to 5 oz red tomatoes. You can chop this tomato into tiny cubes that remain firm and solid in salsa recipes. Also, it is great for making light Italian sauces. Suitable for container gardening. Excellent choice for home gardens. Disease Resistant: V, FF, N. Determinate.



TM936-10 - Galahad Tomato

2020 All-America Selections Winner!

69 days. *Solanum lycopersicum*. (F1) This early maturing compact plant produces high yields of 7 to 12 oz shiny red tomatoes. An AAS Award Winning variety! Great tomato flavor. They are very sweet, meaty, and juicy. Perfect for sandwiches, salads, and slicing. One of the most disease-resistant tomato varieties. It has fantastic flavor and impressive disease resistance. It can be harvested with green shoulders and ripened in storage. Crack Resistant. Does well in the North, Midwest, and Southern parts of the country. An excellent choice for home gardens, farmer's markets, market growers, open production, and commercial production. Disease Resistant: F, FF, FFF, GLS, LB, N, V, TSWV. Determinate.



TM828-20 - Garcia Tomato

80 days. *Solanum lycopersicum*. (F1) Plant produces high yields of deep red cherry tomatoes. They are very sweet and flavorful. Perfect for salads and snacks. It has a long shelf life. Grow in clusters. Excellent choice for home gardens. Disease Resistant: V, FF, TMV. Indeterminate.



TM610-10 - Glamour Tomato Seeds

74 days. *Solanum lycopersicum*. Open Pollinated. Glamour Tomato. This early maturing plant produces high yields of 6 to 10 oz red tomatoes. They are meaty, very flavorful, and have thick walls. Perfect for sandwiches, salads, slicing, and canning. Crack Resistant. Excellent choice for home gardens and market growers. A variety from the USA. United States Department of Agriculture, PI 644749. Disease Resistant: V, FF, BS. Indeterminate.



TM806-20 - Gold Dust Tomato

62 days. *Solanum lycopersicum*. Open Pollinated. This early maturing plant produces good yields of 8 oz deep orange tomatoes. Perfect for sandwiches, salads, slicing, and gourmet dishes. Suitable for container gardening. Crack-Resistant. Excellent choice for home gardens, market growers, and open field production. A variety developed at the University of New Hampshire, USA. United States Department of Agriculture, PI 564170. Disease Resistant: V. Determinate.



TM346-20 - Gold Nugget Tomato

56 days. *Solanum lycopersicum*. Open Pollinated. This early maturing bush-type plant produces heavy yields of 1 oz golden yellow cherry tomatoes. They are very flavorful. Perfect for salads and garnishes. The plant is usually the first to bear tomatoes and produces an abundant crop all season long. Winner of the prestigious British Horticultural Society (RHS) Award of Garden Merit. Suitable for container gardening. Grows in clusters. Crack-Resistant. An excellent choice for home gardens and market growers. A variety was developed by Dr. Jim Baggett at the Oregon State University, USA. United States Department of Agriculture, PI 645429. Diseases Resistant: V. Determinate.



TM401-20 - Goliath Cluster Tomato Seeds

65 days. *Solanum lycopersicum*. (F1) Goliath Cluster Tomato. This early maturing plant produces good yields of 4 to 5 oz red tomatoes. They are very flavorful. Perfect for sandwiches, salads, and slicing. These superior tomatoes grow in clusters and are the On-the-Vine type found in your supermarkets. It holds up well after picking and keeps its flavor for up to 2 weeks. Why pay high prices at the supermarket when you can grow them in your home garden? Excellent choice for home gardens and market growers. Disease Resistant: V, FF, TMV. Indeterminate.



TM213-20 - Goliath Early Tomato Seeds

58 days. *Solanum lycopersicum*. (F1) Goliath Early Tomato The plant produces high yields of 8 oz red tomatoes. Perfect for sandwiches, salads, and slicing. One of the earliest slicing tomatoes on the market. Similar to the Early Girl Tomato, but larger and more disease resistant. Excellent choice for home gardens and market growers. A variety from the USA. Disease Resistant: V, FF, N, A, St, TMV. Indeterminate.



TM287-20 - Goliath Italian Tomato Seeds

76 days. *Solanum lycopersicum*. (F1) Goliath Italian Tomato. The plant produces good yields of 8 oz bright red beefsteak tomatoes. They are very sweet, meaty, juicy, and flavorful. Perfect for sandwiches, salads, slicing, and Italian dishes. An excellent choice for home gardens. Disease Resistant: V, FF, N, A, TMV. Indeterminate.



TM107-20 - Goliath Old Fashioned Tomato Seeds

78 days. *Solanum lycopersicum*. (F1) Goliath Old Fashioned Tomato. The plant produces good yields of 1 to 2 lb red tomatoes. They are very sweet, juicy, and flavorful. It has all the flavor of a fine heirloom variety. Perfect for salads, slicing, and sandwiches. An excellent choice for home gardens. Disease Resistant: V, F, LB. Indeterminate.



TM53-20 - Goliath Original Tomato

65 days. *Solanum lycopersicum*. (F1) This early maturing plant produces high yields of 10 to 15 oz bright red tomatoes. Perfect for sandwiches, salads, and slicing. This beautiful tomato has a virtually blemish-free exterior. One of the best early varieties on the market and one of the most disease-resistant tomato varieties too. Excellent choice for home gardens, market growers, and open field production. Disease Resistant: V, FF, N, A, St, TMV. Indeterminate.



TM566-10 - Goliath Prime Beef Tomato Seeds

70 days. *Solanum lycopersicum*. (F1) Goliath Prime Beef Tomato. This early maturing plant produces good yields of 10 oz red beefsteak tomatoes. They are sweet and very flavorful. Perfect for salads, slicing, and sandwiches. Excellent choice for home gardens and market growers. A variety from the USA. Disease Resistant: V, FF, St, TMV. Indeterminate.



TM589-20 - Goliath Tomato

85 days. *Solanum lycopersicum*. Open Pollinated. The plant produces high yields of 1 lb to 3 lb red beefsteak tomatoes. They are very sweet and flavorful. Perfect for sandwiches, burgers, salads, and slicing. One of the best early giant tomato varieties on the market. It is larger and more disease resistant than the Whopper Improved Tomato and other Giant Tomato varieties. This is a huge plant that produces 70 or more from each plant. The plant requires support, either staking or cages. An excellent choice for home gardens. An heirloom variety dating back to the late 1800s. United States Department of Agriculture, G 33050. Disease Resistant: V, FF, TMV. Indeterminate.



TM506-10 - Granddaddy Tomato Seeds

72 days. *Solanum lycopersicum*. (F1) Granddaddy Tomato. This early maturing plant produces good yields of 10 to 16 oz brilliant red tomatoes. They are very sweet, meaty, juicy, and flavorful. Perfect for sandwiches, hamburgers, salads, and slicing. These blue ribbon prize winning tomatoes will be the topic of conversation when guests sit down to eat. One of the best quality giant beefsteak tomatoes available anywhere! Suitable for container gardening. An excellent choice for home gardens. Disease Resistant: V, F. Determinate.



TM485-20 - Grandeur Tomato Seeds

75 days. *Solanum lycopersicum*. (F1) Grandeur Tomato. The plant produces good yields of 6 to 9 oz red tomatoes. They are very sweet, meaty, juicy, and flavorful. Perfect for sandwiches, salads, and slicing. grow in clusters of 5 to 7. It has large leaves that protect tomatoes from sun-scauld. Crack Resistant. Excellent choice for home gardens and market growers. A variety developed in Japan. Disease Resistant: V, F, N, St, TMV. Indeterminate.



TM648-10 - Grandma's Pick Tomato

78 days. *Solanum lycopersicum*. (F1) Plant produces good yields of very 10 to 14 oz bright red beefsteak tomatoes. This hybrid tomato has an heirloom-like flavor! Perfect for sandwiches, salads, and slicing. It is supposed to be high in Lycopene, and as an antioxidant, its consumption can reduce the risk of some cancers. This variety is suitable for greenhouse and open-field production. Always a great seller at Farmer's Markets! Excellent choice for home gardens, greenhouses, market growers, and open field production. Disease Resistant: V, F, N, St. Indeterminate.



TM232-20 - Granny Smith Tomato

72 days. *Solanum lycopersicum*. (F1) This early maturing plant produces good yields of 6 to 8 oz tomatoes. They are very flavorful. Perfect for grilling, frying, and slicing, and can be diced without becoming mushy. Keeps for two weeks after picking. An excellent choice for home gardens. Disease Resistant: V, F, A, St, TMV. Indeterminate.



TM545-10 - Hard Rock Tomato

80 days. *Solanum lycopersicum*. Open Pollinated. The plant produces good yields of 3 oz deep red tomatoes. It has a rich old-fashioned tomato flavor. Perfect for salads and canning. The plant has good foliage protecting tomatoes from sun-scald. An excellent choice for home gardens. An heirloom variety. Disease Resistant: V, F, N. Determinate.



TM277-10 - Health Kick Tomato Seeds

72 days. *Solanum lycopersicum*. (F1) Health Kick Tomato. This early maturing plant produces high yields of 4 to 6 oz red plum tomatoes. Perfect in salads or for making sauce and paste. This variety has 50% more Lycopene than any other tomato. Lycopene is an antioxidant that is proving helpful in preventing cancer and other diseases. One of the most disease-resistant tomato varieties. To maximize yield potential, either stake or use cages. An excellent choice for home gardens, farmer's markets, and market growers. Disease Resistant: V, FF, A, St, BS, TMV, TSWV. Determinate.



TM852-10 - Heatmaster Tomato Seeds

75 days. *Solanum lycopersicum*. (F1) Heatmaster Tomato. The plant produces high yields of 7 oz deep red tomatoes. Perfect for sandwiches, salads, and slicing. A great storage variety. The plant has the ability to set fruit under higher temperatures than other varieties. Developed for the hot climate of the Southeast. One of the most disease resistant tomato varieties. Heat Tolerant. An excellent choice for home gardens and market growers. Disease Resistant: V, FF, N, A, St, ToMV. Determinate.



TM59-10 - Heatwave II Tomato Seeds

68 days. *Solanum lycopersicum*. (F1) Heatwave II Tomato. This early maturing plant produces good yields of 6 to 7 oz red tomatoes. Perfect for salads, sandwiches, and eating fresh off the vine. This heat-tolerant variety is suitable for those in the deep South where daytime temperatures average in the 90s. Everyone should grow at least one plant in hot weather regions. An excellent choice for home gardens. Disease Resistant: V, F, A, St. Determinate.



TM613-10 - Heinz 1350 Tomato

75 days. *Solanum lycopersicum*. Open Pollinated. The plant produces heavy yields of 4 to 6 oz bright red tomatoes. Perfect for sandwiches, salads, and slicing. A great processing variety for canning, sauce, or cooking. A 1963 variety developed by the H. J. Heinz Company primarily for Eastern Canada and the Northeast USA. These seeds originated from tomato plants grown from HEINZ 1439. Crack Resistant. Excellent choice for home gardens, market growers, and open field production. United States Department of Agriculture, PI 341133. Disease Resistant: V, F. Determinate.



TM60-10 - Heinz 1439 Tomato Seeds

75 days. *Solanum lycopersicum*. Open Pollinated. Heinz 1439 Tomato. The plant produces heavy yields of 6 oz red tomatoes. This variety was developed by Heinz for making ketchup, puree, and sauces. Perfect processing and canning variety. Also great for sandwiches, salads, and slicing. Crack Resistant. Excellent choice for home gardens, market growers, and open field production. These seeds originated from tomato plants grown from HEINZ 1439. United States Department of Agriculture, PI 341137. Disease Resistant: V, F, A. Determinate.



TM853-10 - Homeslice Tomato

63 days. *Solanum lycopersicum*. (F1) This early maturing plant produces high yields of 5 to 6 oz bright red tomatoes. It has a rich old-fashioned tomato flavor. Perfect for sandwiches, salads, and slicing. Suitable for patios, containers, and small gardens. An excellent choice for home gardens. Disease Resistant: V, F. Determinate.



TM223-20 - Homesweet Tomato

70 days. *Solanum lycopersicum*. (F1) This early maturing plant produces good yields of 6 oz red tomatoes. They are very sweet, juicy, and flavorful. This is one of the sweetest tomatoes on the market. Perfect for sandwiches, salads, and slicing. Excellent choice for home gardens. Disease Resistant: V, FF, A, St. Determinate.



TM65-20 - Husky Cherry Red Tomato

65 days. *Solanum lycopersicum*. (F1) This early maturing plant produces heavy yields of ½ to ¾ oz red cherry tomatoes. They are very sweet and flavorful. Perfect for salads and snacks. Grows in clusters. This variety requires no pruning. To maximize yield potential, either stake or use cages. Perfect for container gardening, patio, or small gardens where space is very limited but is not recommend for a hydroponic growing system. An excellent choice for home gardens. Disease Resistant: V, F, A. Indeterminate.



TM68-10 - Husky Red Tomato

67 days. *Solanum lycopersicum*. (F1) This early maturing plant produces good yields of 5 to 7 oz red tomatoes. They are very sweet and flavorful. Perfect for sandwiches, salads, and slicing. This variety requires no pruning! Perfect for container gardening, patios, or small gardens where space is very limited! An excellent choice for home gardens. Disease Resistant: V, FF, A, St. Indeterminate.

TM526-10 - Incas Tomato Seeds

70 days. *Solanum lycopersicum*. (F1) Incas Tomato. This early maturing plant produces good yields of 3 oz bright red Roma tomatoes. It has firm, thick, and meaty flesh. Perfect for making pastes, purees, sauces, or canning. An early San Marzano-type variety ripening as early as late June. Excellent shelf life. Suitable for container gardening. Excellent choice for home gardens. A variety from the USA. Disease Resistant: V, FF. Determinate.



TM69-10 - Italian Gold Tomato

75 days. *Solanum lycopersicum*. Open Pollinated. The plant produces good yields of 3 to 6 oz golden-orange Roma tomatoes. They are very sweet, meaty, and flavorful. Perfect for paste, sauces, canning, and freezing. Grows in clusters of 6. An excellent choice for home gardens. Disease Resistant: V, FF. Determinate.



TM121-20 - Jelly Bean Red Tomato

65 days. *Solanum lycopersicum*. (F1) This early maturing plant produces heavy yields of ½ to ¾ oz red grape tomatoes. They are very sweet and flavorful. Perfect for salads and snacks. Grows in clusters of 15 to 30. They hold up well during shipment. Crack Resistant. An excellent choice for home gardens and market growers. Disease Resistant: V, FF, A, St. Indeterminate.



TM396-20 - Jelly Bean Yellow Tomato

65 days. *Solanum lycopersicum*. (F1) This early maturing plant produces heavy yields of ½ to ¾ oz yellow grape tomatoes. They are very sweet and flavorful. Perfect for salads and snacks. The plant grows 15 to 30 tomatoes in clusters. The plant requires support, either staking or cages. They hold up well during shipment. An excellent choice for home gardens and market growers. Disease Resistant: V, FF, A, St. Indeterminate.



TM371-20 - Jet Star Tomato Seeds

72 days. *Solanum lycopersicum*. (F1) Jet Star Tomato. This early maturing plant produces tremendous yields of 7 to 9 oz red tomatoes. They are meaty and very flavorful. Perfect for salads, sandwiches, and canning. In tests, it had the highest yield of total marketable and premium quality tomatoes averaging 100 tomatoes per plant. It is also rated as the top greenhouse tomato. Suitable for commercial growers. Low acidity variety. Crack Resistant. A fresh market and plant sales favorite. To maximize yield potential, either stake or use cages. An excellent choice for home gardens, greenhouses, market growers, and open field production. Disease Resistant: V, F. Indeterminate.



TM278-20 - Jetsetter Tomato Seeds

64 days. *Solanum lycopersicum*. (F1) Jetsetter Tomato. This early maturing plant produces high yields of 8 oz red tomatoes. They are very sweet, juicy, and flavorful with a rich old-fashioned tomato flavor. Perfect for sandwiches, salads, and slicing. This variety matures very early offering those in the South a great early harvest. It is one of the most disease resistant tomato varieties available. The type is seen in the fresh vegetable aisle of supermarkets! An excellent choice for home gardens, farmer's markets, market growers, open production, and commercial production. Disease Resistant: V, FF, N, A, St, TMV. Indeterminate.



TM674-10 - La Roma III Tomato Seeds

76 days. *Solanum lycopersicum*. (F1) La Roma III Tomato. The plant produces high yields of 5 to 8 oz bright red Roma tomatoes. They have thick walls, are meaty, and are very flavorful. Cooking intensifies flavor, too. One of the very best Italian-type tomatoes on the market. Perfect for making tomato puree, paste, and sauce. The flesh is thick and drier so that it will cook down into a thick sauce. The tomato freezes well too for later cooking. One of the most disease-resistant tomato varieties. Always a great seller at Farmer's Markets! An excellent choice for home gardens and market growers. Disease Resistant: V, FF, N, A, St, ToMV. Determinate.



TM931-10 - Lemon Boy Plus Tomato Seeds

75 days. *Solanum lycopersicum*. (F1) Lemon Boy Plus Tomato. The plant produces high yields of 8 oz bright lemon yellow beefsteak tomatoes. It is an eye-catching tomato with wonderful color and flavor. They are sweet and mild, meaty, juicy, and flavorful. Excellent for salads, slicing, salsas, and gourmet dishes. This variety has added disease resistance. The plant requires support, either staking or cages. An excellent choice for home gardens. Disease Resistant: V, F, FF, FFF, N, A, FCRR, LM, St, TMV. Indeterminate.



TM76-10 - Lemon Boy Tomato Seeds

72 days. *Solanum lycopersicum*. (F1) Lemon Boy Tomato. This early maturing plant produces high yields of 8 oz bright lemon yellow tomatoes. It is an eye-catching tomato with wonderful color and flavor. They are sweet and mild, meaty, juicy, and flavorful. Excellent for salads, slicing, salsas, and gourmet dishes. The plant requires support, either staking or cages. An excellent choice for home gardens. Disease Resistant: V, F, N, A, St. Indeterminate.



TM194-10 - Liberty Bell Tomato Seeds

80 days. *Solanum lycopersicum*. (F1) Liberty Bell Tomato. The plant produces heavy yields of 4 to 7 oz red tomatoes. They have thick walls are flavorful and look just like sweet peppers. It's a great stuffing tomato. Low acidity variety. Crack Resistant. Excellent choice for home gardens and market growers. United States Department of Agriculture, PI 644794. Disease Resistant: V, FF, A, St. Determinate.



TM792-20 - Lisa Dette Tomato

72 days. *Solanum lycopersicum*. (F1) This early maturing plant produces high yields of red grape tomatoes. They are very sweet, juicy, and flavorful. Perfect for salads and snacks. Grows in clusters. Suitable for greenhouse or commercial growers. Excellent choice for home gardens, greenhouses, market growers, and open field production. Disease Resistant: V, F, TMV. Indeterminate.



TM838-20 - Little Napoli Tomato

63 days. *Solanum lycopersicum*. (F1) This early maturing plant produces high yields of 2 oz bright red pear-shaped tomatoes. It has a rich tomato flavor. They are very sweet, meaty, and juicy. Perfect for canning, and making rich tomato sauce, salsa, soup, or ketchup. Perfect for container gardening, patios, hanging baskets, or small gardens where space is very limited! Excellent choice for home gardens. Disease Resistant: V, F. Determinate.



TM903-10 - Madame Marmande Tomato Seeds

72 days. *Solanum lycopersicum*. (F1) Madame Marmande Tomato. This early maturing plant produces high yields of 10 to 14 oz red beefsteak tomatoes. They are very sweet, juicy, and flavorful. Perfect for salads, sandwiches, and gourmet dishes. Crack Resistant. An excellent choice for home gardens. Disease Resistant: V, F, A. Indeterminate.



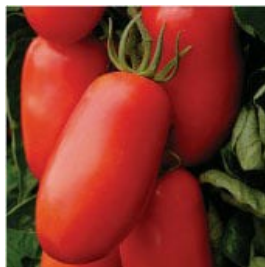
TM440-20 - Manitoba Tomato Seeds

58 days. *Solanum lycopersicum*. Open Pollinated. Manitoba Tomato. This early maturing plant produces high yields of 6 oz bright red tomatoes. They are meaty with a tangy flavor. Perfect for sandwiches, salads, slicing, and canning. Great for those with short growing seasons! Suitable for Southern Canadian regions and the Northern US regions of Montana, Dakotas, Minnesota, Wisconsin, Michigan, and New England states. Suitable for container gardening or small gardens where space is very limited! An excellent choice for home gardens. A variety was developed by the Experimental Farm in Morden, Manitoba, Canada. United States Department of Agriculture, PI 279815. Disease Resistant: V, F. Determinate.



TM519-10 - Margherita Tomato

72 days. *Solanum lycopersicum*. (F1) This early maturing plant produces high yields of 5 to 6 oz bright red tomatoes. It is a firm tomato making it easy to chop and slice. Perfect for tossing into pasta, for sandwiches, or roasting. This tomato was named after Pizza Margherita, the classic summertime pie topped with mozzarella, tomato, and fresh basil. An excellent choice for home gardens. Disease Resistant: V, F. Determinate.



TM364-20 - Marglobe Improved Tomato

77 days. *Solanum lycopersicum*. Open Pollinated. The plant produces high yields of 5 to 8 oz red tomatoes. Perfect for salads, slicing, sandwiches, sauce, and canning. This Marglobe strain has been improved for enhanced disease resistance. The plant has good foliage protecting tomatoes from sunscald. An excellent choice for home gardens. Disease Resistant: V, F, A, St, LM. Determinate.



TM79-20 - Marglobe Select Tomato

75 days. *Solanum lycopersicum*. Open Pollinated. The plant produces high yields of red tomatoes. They are very sweet, have thick walls, and are flavorful. Perfect for salads, slicing, sandwiches, and canning. An excellent choice for home gardens. United States Department of Agriculture, NSL 53698. Disease Resistant: V, F, A. Determinate



TM209-20 - Marglobe Supreme Tomato

75 days. *Solanum lycopersicum*. Open Pollinated. The plant produces good yields of 4 to 6 oz red tomatoes. They are smooth and firm. Perfect for sandwiches, salads, slicing, and canning. It is a cross between Marvel and a Globe. Crack-Resistant. The plant has good foliage protecting tomatoes from sun-scall. Does extremely well in hot and humid regions. An excellent choice for home gardens and market growers. An heirloom variety was developed by the United States Department of Agriculture in 1917. United States Department of Agriculture, NSL 22725. Disease Resistant: V, F, LB. Determinate.



TM620-20 - Marglobe Tomato

75 days. *Solanum lycopersicum*. Open Pollinated. The plant produces high yields of 8 to 10 oz red tomatoes. Perfect for sandwiches, salads, slicing, and canning. To maximize yield potential, either stake or use cages. Crack Resistant. Excellent choice for home gardens. An heirloom variety was developed by the US Department of Agriculture in 1925. United States Department of Agriculture, PI 270198. Disease Resistant: V, F. Determinate.



TM268-20 - Marmande Tomato

67 days. *Solanum lycopersicum*. Open Pollinated. This early maturing plant produces high yields of 6 to 10 oz red tomatoes. An old-time favorite that has the full rich tomato flavor. They are very sweet, meaty, and juicy. Perfect for salads, sandwiches, and gourmet dishes. Widely grown in the field and greenhouses. Excellent choice for home gardens and market growers. An heirloom variety was developed by Vilmorin Seed Company, France in 1897. United States Department of Agriculture, PI 157850. Disease Resistant: V, F, A. Semi-Determinate.



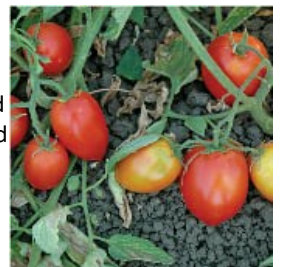
TM568-10 - Marmara Tomato

75 days. *Solanum lycopersicum*. (F1) The plant produces good yields of 5 to 7 oz bright red tomatoes. They are sweet and flavorful. Perfect for salads, slicing, and sandwiches. This is a modern version of the Marmande tomato. An excellent choice for home gardens and market growers. Disease Resistant: V, F, TMV. Indeterminate.



TM883-20 - Mely Tomato Seeds

75 days. *Solanum lycopersicum*. (F1) Mely Tomato. The plant produces high yields of 4 to 5 oz dark red tomatoes. They are firm and very flavorful. Perfect for salads, slicing, and sandwiches. These tomatoes are one of the best for open fields and commercial production. Excellent choice for home gardens, market growers, and open field production. Disease Resistance: V, FF, BS, TYLCV. Determinate.



TM893-10 - Mochomo Tomato Seeds

85 days. *Solanum lycopersicum*. (F1) Mochomo Tomato. The plant produces high yields of 5 to 6 oz dark red Roma tomatoes. They have thick walls, are meaty, and are flavorful. Perfect for salsa, sauces, and canning. The plant has good foliage protecting tomatoes from sun-scald. It does extremely well in the Southwest and Southern regions of the United States and in Mexico. The strong compact plant can be cultivated in the greenhouse year-round and is also suitable for open field production. An excellent choice for home gardens, greenhouses, market growers, and open field production. Disease Resistant: V, FFF, TMV, TSWV, TYLCV. Indeterminate.



TM621-10 - Momotaro Tomato Seeds

70 days. *Solanum lycopersicum*. (F1) Momotaro Tomato. This early maturing plant produces high yields of 6 to 8 oz pinkish-red tomatoes. They are very flavorful, rich, and sweet, with just the right amount of acid. This very high-quality tomato is perfectly smooth with no blemishes or imperfections! Perfect for salads, slicing, and sandwiches. Grows in clusters 6 to 7. This is the most popular tomato in Japan. It is named after a hero in Japanese folklore. Crack Resistant. Heat Tolerant. It has a long shelf life and is a good choice for shipping. Good quality tomatoes are used for commercial production. An excellent choice for home gardens, market growers, and open field production. This variety is one of the best tomatoes ever developed by the Takii Seed Company in Japan. Disease Resistant: V, N, FF, St, ToMV. Indeterminate.



TM894-20 - Monticello Tomato

73 days. *Solanum lycopersicum*. (F1) This early maturing plant produces high yields of 4 to 5 oz red Roma tomatoes. Tomatoes are firm and very flavorful. Perfect for canning and sauce. This variety has been shown to grow exceptionally in the southeast and in mountain regions. An excellent choice for home gardens, market growers, and open field production. Disease Resistance: V, F, N, St, BS, TSWV. Determinate. (Pelleted Seeds)



TM82-20 - Mortgage Lifter Tomato Seeds

85 days. *Solanum lycopersicum*. Open Pollinated. Mortgage Lifter Tomato. The plant produces heavy yields of 1 to 2 lb pink beefsteak tomatoes. They are very sweet, meaty, juicy, and flavorful. It has a rich tomato flavor. Perfect for salads, slicing, and sandwiches. This variety was developed in the 1930s by Mr. Byles of Logan, WV to help pay off his home mortgage. He was able to pay off his \$6,000 mortgage in 6 years by selling the plants for \$1 each. He crossed a German Johnson, a Beefsteak, and an Italian & English variety to come up with this unique variety. An excellent choice for home gardens. A family heirloom variety from Logan, West Virginia, USA. United States Department of Agriculture, PI 647467. Disease Resistant: V, F, N. Indeterminate.



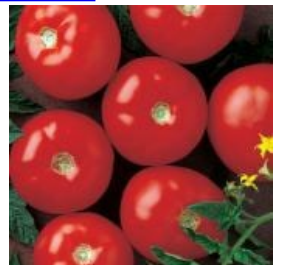
TM195-20 - Mountain Delight Tomato

70 days. *Solanum lycopersicum*. (F1) This early maturing plant produces excellent yields of red tomatoes. They are firm and flavorful. Perfect for salads, slicing, and sandwiches. Excellent choice for home gardens and market growers. A variety developed by NC State University, NC, USA. Disease Resistant: V, FF, ALS, BER, GW. Determinate.



TM84-10 - Mountain Fresh Plus Tomato Seeds

79 days. *Solanum lycopersicum*. (F1) Mountain Fresh Plus Tomato. The plant produces good yields of 8 to 12 oz red tomatoes. They are very sweet, very firm, smooth, and flavorful. Perfect for salads, slicing, and sandwiches. Crack Resistant. The plant has good foliage protecting tomatoes from sunscald. Does well in cool or wet climates. It is the most widely grown market tomato in the East and Midwest. Good-quality tomatoes are used for commercial production. Great fresh market or chain store type. An excellent choice for home gardens, market growers, and open field production. A variety was developed by Dr. Randy Gardner at North Carolina State University, NC, USA. Disease Resistant: V, FF, N, ALS, GW, BER. Determinate.



TM594-10 - Mountain Glory Tomato

72 days. *Solanum lycopersicum*. (F1) This early maturing plant produces heavy yields of 10 to 12 oz red tomatoes. Perfect for salads, slicing, and sandwiches. This variety has increased firmness that will hold up during shipping. These high-quality tomatoes are used for commercial production. To maximize yield potential, either stake or use cages. Excellent choice for home gardens, market growers, and open field production. A variety was developed by NC State University at the Mountain Research and Extension Center in Fletcher, NC, USA. Disease Resistant: V, FFF, TSWV. Determinate. **(Pelleted Seeds)**



TM726-20 - Mountain Gold Tomato

70 days. *Solanum lycopersicum*. Open Pollinated. This early maturing plant produces good yields of 8 to 12 oz golden-yellow tomatoes. They are firm with a mild flavor. Perfect for salads, slicing, and sandwiches. Crack Resistant. Excellent choice for home gardens and market growers. A variety was developed by Dr. Randolph G. Gardner in 1990 at the North Carolina State Mountain Horticultural Crops Research Station, NC, USA. United States Department of Agriculture, PI 547077. Disease Resistant: V, FF. Determinate.



TM749-10 - Mountain Magic Tomato Seeds

70 days. *Solanum lycopersicum*. (F1) Mountain Magic Tomato. This early maturing plant produces high yields of large 2 oz bright red cherry tomatoes. They are very sweet and flavorful. Perfect fresh eating right off the vine or in salads. They are known as Campari tomatoes and command high prices at specialty markets and supermarkets. The tomatoes hold well on the plant and hold up very well after harvest. Grows in clusters of 7 to 8. Crack Resistant. An excellent choice for home gardens, farmer's markets, market growers, open production, and commercial production. Disease Resistant: V, FFF, A, EB, LB. Indeterminate. **(Pelleted Seeds)**



TM856-10 - Mountain Majesty Tomato Seeds

78 days. *Solanum lycopersicum*. (F1) Mountain Majesty Tomato. The plant produces high yields of 8 to 14 oz deep red tomatoes. The tomatoes stay firm when ripe. Perfect for slicing, salads, or canning. Crack Resistant. The plant has good foliage protecting tomatoes from sun-scall. To maximize yield potential, either stake or use cages. Good-quality tomatoes are used for commercial production. An excellent choice for home gardens, market growers, and open field production. Disease Resistance: V, FF, TSWV. Determinate.



TM830-10 - Mountain Merit Tomato

2014 All-America Selections Winner!

75 days. *Solanum lycopersicum*. (F1) The plant produces high yields of 8 to 10 oz deep red tomatoes. They are very flavorful. Perfect for sandwiches, salads, slicing, and canning. Crack Resistant. Excellent choice for home gardens and market growers. Disease Resistant: V, FFF, N, LB, TSWV. Determinate.



TM85-20 - Mountain Pride Tomato

77 days. *Solanum lycopersicum*. (F1) The plant produces good yields of 6 to 8 oz red tomatoes. They are firm and flavorful. It was bred especially for mountain regions and higher elevation areas. Does well in the Southwest region of the country. Crack Resistant. Excellent choice for home gardens and market growers. A variety was developed by North Carolina State University, NC, USA. United States Department of Agriculture, PI 647558. Disease Resistant: V, FF, A, St, BS. Determinate.



TM909-10 - Mountain Rouge Tomato

2019 All-America Selections Winner!

72 days. *Solanum lycopersicum*. (F1) This early maturing plant produces heavy yields of 12 to 14 oz beefsteak pink tomatoes. Some tomatoes grow up to 2 lbs size! One of the best-tasting tomatoes on the market. It has a delicious flavor with just the right balance of acid and sugar. Perfect for sandwiches, salads, slicing, and canning. Performs especially well in cooler climates. An excellent choice for home gardens and market growers. Disease Resistant: F, V, N, LB. Indeterminate. **(Pelleted Seeds)**



TM86-20 - Mountain Spring Tomato Seeds

69 days. *Solanum lycopersicum*. (F1) Mountain Spring Tomato. This early maturing plant produces high yields of 10 to 12 oz bright red tomatoes. They are firm and flavorful. Perfect for salads, slicing, and sandwiches. The plant has good foliage protecting tomatoes from sunscald. Suitable for the Southeastern part of the country. Crack Resistant. Excellent choice for home gardens and market growers. A variety was developed by Dr. Randy Gardner in 1991 at the North Carolina State University, NC, USA. Disease Resistant: V, FF, ALS, BER. Determinate.



TM353-20 - New Yorker Tomato

63 days. *Solanum lycopersicum*. Open Pollinated. This early maturing plant produces high yields of 4 to 6 oz red beefsteak tomatoes. They are very sweet, meaty, juicy, and flavorful. Perfect for salads, slicing, sandwiches, and canning. The plant does well in cool weather. Cold Tolerant, early-season tomato produces some of the first fruits in your garden. Perfect for Northern regions with a short season. Crack Resistant. An excellent choice for home gardens. A variety was developed by Dr. Robinson of the New York Agricultural Experiment Station in Geneva, New York, USA. United States Department of Agriculture, PI 645319. Disease Resistant: V, A, EB. Determinate.



TM92-20 - Northern Delight Tomato

65 days. *Solanum lycopersicum*. Open Pollinated. This early maturing plant produces high yields of 1 to 2 oz red tomatoes. Perfect for salads and snacks. It was developed to perform in the short season and cooler regions in the Northern States. Cold Tolerant. Suitable for container gardening, patios, or small gardens where space is very limited! Excellent choice for home gardens. A variety was developed by Dr. Boe in 1991 by North Dakota State University, North Dakota, USA. Disease Resistant: V, F. Determinate.



TM257-10 - Orange Pixie Tomato

52 days. *Solanum lycopersicum*. (F1) This early maturing plant produces high yields of 1 ¾" yellow-orange cherry tomatoes. They are very sweet, meaty, juicy, and flavorful. Perfect for salads, garnishes, or culinary creations. Suitable for container gardening, patios, hanging baskets, or small gardens where space is very limited! Excellent choice for home gardens. Disease Resistant: V, F, TMV. Determinate.



TM552-10 - Orange Sunshine Tomato

58 days. *Solanum lycopersicum*. (F1) Early maturing plant produces heavy yields of ½ to ¾ oz bright orange cherry tomatoes. They are firm, sweet, and very flavorful. Perfect fresh eating right off the vine or in salads. Excellent choice for home gardens and market growers. Disease Resistant: V, F. Indeterminate.



TM99-20 - Oregon Spring Tomato

58 days. *Solanum lycopersicum*. Open Pollinated. This early maturing plant produces heavy yields of 4 to 6 oz red tomatoes. It has a rich tomato flavor. They are very flavorful, meaty, and have very few seeds. Perfect for salads, slicing, sandwiches, and for making ketchup, paste, and sauce. It is a cross between a Russian Severianin and a Starshot. Does well in cool weather too. Cold tolerant. Suitable for short-season regions. Recommended for cool northern or high-elevation locations. They are parthenocarpic, which means plants form fruit without pollination. An excellent choice for home gardens. A variety was developed by Dr. James Baggett at Oregon State University, Oregon, USA. Disease Resistant: V. Determinate.



TM347-20 - Oroma Tomato

70 days. *Solanum lycopersicum*. Open Pollinated. This early maturing plant produces heavy yields of 5" long red tomatoes. They are meaty and very flavorful. Perfect for making thick tomato paste and sauce. Also great for making ketchup and canning. Excellent choice for home gardens. Disease Resistant: V. Determinate.



TM881-10 - Pamella Tomato Seeds

80 days. *Solanum lycopersicum*. (F1) Pamella Tomato. The plant produces high yields of 6 to 8 oz red tomatoes. They are very sweet, juicy, and flavorful. Perfect for salads, slicing, and sandwiches. One of the most disease resistant tomato varieties. It is one of the best for greenhouses and open-field production. An excellent choice for home gardens, greenhouses, market growers, and open field production. Indeterminate. Disease Resistance: V, FF, N, TMV, TSWV, TYLCV.



TM102-20 - Park's Whopper Improved Tomato

65 days. *Solanum lycopersicum*. (F1) This early maturing plant produces good yields of 14 oz red tomatoes. They are very sweet, meaty, juicy, and flavorful. These are beautiful big tasty red tomatoes that are excellent for salads, burgers, and sandwiches. Crack Resistant. The plant requires support, either staking or cages. An excellent choice for home gardens and market growers. Disease Resistant: V, FF, N, TMV. Indeterminate.



TM880-20 - Patty Tomato

80 days. *Solanum lycopersicum*. (F1) The plant produces high yields of 4 to 5 oz red tomatoes. They have thick walls, are meaty, and have a mild flavor. Perfect for making sauce and paste. These Roma tomatoes are firm and have a uniform color for marketplace sales. It has a good shelf life. It has an excellent disease package! An excellent choice for home gardens, market growers, and open field production. Disease Resistance: V, FF, N, BS, TMV, TSWV. Determinate.



TM902-10 - Phoenix Tomato Seeds

72 days. *Solanum lycopersicum*. (F1) Phoenix Tomato. This early maturing plant produces heavy yields of 8 to 12 oz red tomatoes. They are very flavorful. Perfect for sandwiches, salads, slicing, and canning. It was developed for South Texas and places with similar growing conditions. Heat Tolerant. Crack Resistant. An excellent choice for home gardens and market growers. Disease Resistant: V, A, St. Determinate.



TM279-20 - Pink Girl Tomato

76 days. *Solanum lycopersicum*. (F1) The plant produces heavy yields of 6 to 8 oz pink tomatoes. They are very sweet, juicy, and flavorful. Perfect for salads, slicing, and sandwiches. Crack Resistant. Excellent choice for home gardens. Disease Resistant: V, F, A, St. Indeterminate.



TM804-10 - Plum Regal Tomato Seeds

76 days. *Solanum lycopersicum*. (F1) Plum Regal Tomato. The plant produces high yields of 3 to 4 oz deep red plum tomatoes. It has a bright red interior and a superior flavor. Perfect for making tomato sauce, paste, salsa, and canning. The plant has good foliage protecting tomatoes from sun-scald. Crack Resistant. An excellent choice for home gardens, farmer's markets, and market growers. Disease Resistant: V, FF, EB, LB, TSWV. Determinate.



TM110-20 - Porter Improved Tomato

75 days. *Solanum lycopersicum*. Open Pollinated. The plant produces heavy yields of 3 to 4 oz red tomatoes. They are very flavorful. Perfect for making tomato juice, sauce, salads, and canning. A variety was developed by Porter & Son Seed Company for Southern regions like Texas. It is larger than Porter Tomato but with the same setting ability. Does extremely well in high heat and low humidity. Grows in clusters of 6. Also known as Porter's Pride Tomato. An excellent choice for home gardens and market growers. United States Department of Agriculture, NSL 34407. Disease Resistant: V, F. Indeterminate.



TM390-20 - Porter Tomato

78 days. *Solanum lycopersicum*. Open Pollinated. The plant produces heavy yields of 2 to 4 oz deep red plum tomatoes. They are very flavorful. Perfect for making tomato juice, sauce, salads, and canning. Crack-Resistant. The plant has good foliage protecting tomatoes from sun-scald. It was developed by Porter & Son Seed Company for Southern regions like Texas. Porter is an old-time drought-tolerant favorite in the Southwest. An excellent choice for home gardens and market growers. United States Department of Agriculture, PI 270281. Disease Resistant: V, F. Indeterminate.



TM859-10 - Poseidon 43 Tomato

78 days. *Solanum lycopersicum*. (F1) The plant produces good yields of 8 oz deep pink tomatoes. They have very smooth skin. If you're looking for a mild tomato, pick Poseidon 43. Perfect for salads, slicing, and sandwiches. Low acidity variety. Excellent choice for home gardens and market growers. Disease Resistant: V, FF, TMV. Indeterminate.



TM891-10 - Rally Tomato

72 days. *Solanum lycopersicum*. (F1) This early maturing plant produces high yields of large red tomatoes. They are very sweet, firm, and flavorful. Perfect for salads, slicing, and sandwiches. Suitable for the Southeast region of the country. An excellent choice for home gardens, market growers, and open field production. Disease Resistant: V, FF, St, ToMV, TYLCV. Determinate.



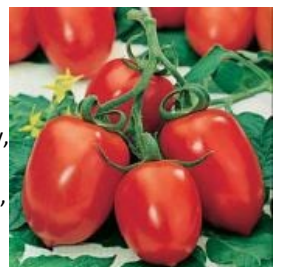
TM892-20 - Red Pride Tomato

78 days. *Solanum lycopersicum*. (F1) Plant produces high yields of 10 to 14 oz red tomatoes. They are sweet and flavorful. It has a rich old-fashioned tomato flavor. Perfect for salads, slicing, and sandwiches. The plant has good foliage protecting tomatoes from sun-scald. Suitable for containers, patios, or small gardens where space is very limited! Does well in the Northeast parts of the country. Excellent choice for home gardens and market growers. Disease Resistant: V, FF, A, St. Determinate.



TM392-20 - Roma VF Tomato

78 days. *Solanum lycopersicum*. Open Pollinated. The plant produces heavy yields of 2 to 4 oz bright red plum-shaped tomatoes. They have a thick wall, are meaty, and very flavorful with very few seeds. Perfect for salads and making, sauce, puree, paste, soup, ketchup, tomato juice, and canning. A good quality tomato is used for commercial production. An excellent choice for home gardens, greenhouses, market growers, and open field production. United States Department of Agriculture, PI 644859. Disease Resistant: V, F. Determinate.



TM427-20 - Rossol Tomato

70 days. *Solanum lycopersicum*. Open Pollinated. This early maturing plant produces high yields of red Roma tomatoes. An excellent processing variety for commercial production. Perfect for salads and making sauce, puree, and paste. An excellent choice for home gardens, market growers, and open field production. Disease Resistant: V, F, N. Determinate.



TM428-20 - Royal Chico Tomato

72 days. *Solanum lycopersicum*. Open Pollinated. This early maturing plant produces high yields of 3 ½ oz bright red pear-shaped tomatoes. They have thick walls, are meaty, and are very flavorful with few seeds. Perfect for salads and making sauce, puree, paste, and canning. An excellent processing variety. Does extremely well in humid regions. Excellent choice for home gardens, market growers, and open field production. Disease Resistant: V, F, N. Determinate.



TM840-10 - Rugged Boy Tomato

75 days. *Solanum lycopersicum*. (F1) The plant produces high yields of 6 to 8 oz red tomatoes. They are very sweet, meaty, juicy, with exceptional flavor. Perfect for salads, slicing, burgers, and sandwiches. Suitable for containers, patios, or small gardens where space is very limited! One of the most disease-resistant tomato varieties. An excellent choice for home gardens, farmer's markets, and market growers. Disease Resistant: V, FF, N, St, LB, TMV. Determinate.



TM269-20 - Rutgers Improved Tomato Seeds

72 days. *Solanum lycopersicum*. Open Pollinated. Rutgers Improved Tomato. This early maturing plant produces high yields of 7 oz dark red tomatoes. They are sweet and flavorful. Perfect for salads, slicing, sandwiches, and canning. This is an improved version of the famous Rutgers tomato. Always a great seller at Farmer's Markets! A high-quality tomato that is used for commercial production. An excellent choice for home gardens, market growers, and open field production. United States Department of Agriculture, PI 644777. Disease Resistant: V, F, A, St, TMV. Determinate.



TM297-20 - Rutgers Select Tomato

78 days. *Solanum lycopersicum*. Open Pollinated. The plant produces heavy yields of 5 to 8 oz red tomatoes. They are sweet and very flavorful. Perfect for salads, slicing, sandwiches, sauce, paste, and canning. An excellent choice for home gardens, market growers, and open field production. An heirloom variety developed at Rutgers University, New Jersey, USA, in the 1920s. United States Department of Agriculture, PI 645198. Disease Resistant: V, F, A, St. Indeterminate.



TM118-20 - Rutgers Tomato Seeds

73 days. *Solanum lycopersicum*. Open Pollinated. Rutgers Tomato. This early maturing plant produces high yields of 6 to 12 oz bright red tomatoes. They are sweet and flavorful. Perfect for salads, slicing, sandwiches, and canning. It is a cross between a J.T.D., an old New Jersey variety from the Campbell Soup Company, and a Marglobe. Crack Resistant. An excellent choice for home gardens, market growers, and open field production. An heirloom variety was developed in 1934 by the New Jersey Experimental Station, New Brunswick, New Jersey, USA. United States Department of Agriculture, PI 270209. Disease Resistant: V, F, A, St. Determinate.



TM660-20 - San Marzano 2 Tomato Seeds

85 days. *Solanum lycopersicum*. Open Pollinated. San Marzano 2 Tomato. The plant produces high yields of 5 to 6 oz bright red plum tomatoes. They have thick walls, are meaty, and are very flavorful. Perfect for making sauce, puree, paste, and canning. This is the standard tomato used to make tomato sauce in Italy. The plant has good foliage protecting tomatoes from sun-scauld. Good quality tomato used for commercial production. An excellent choice for home gardens, market growers, and open field production. A variety from Italy. Disease Resistant: V, F. Indeterminate.



TM446-20 - Santiam Tomato

65 days. *Solanum lycopersicum*. Open Pollinated. This early maturing plant produces heavy yields of 5 oz red tomatoes. They are very sweet, juicy, and flavorful with very few seeds. Perfect for salads, slicing, and sandwiches. It is a cross between a Severianin and a Starshot. Suitable for cooler climates and locations with shorter growing seasons. Excellent choice for home gardens. A variety was developed by Dr. James R. Baggett in 1984 at Oregon State University, Oregon, USA. Disease Resistant: V, F. Determinate.



TM522-10 - Shady Lady Tomato Seeds

80 days. *Solanum lycopersicum*. (F1) Shady Lady Tomato. The plant produces high yields of 6 to 10 oz deep red tomatoes. It is one of the sweetest and most delicious full-flavored tomatoes. Perfect for salads, slicing, and sandwiches. This is the number one producer and a favorite at the farmer's marketplace and is one of the most widely grown fresh market tomatoes in California. It has sturdy vines and heavy foliage that provide good protection against sunburn. Suitable for containers, patios, or small gardens where space is very limited! Good quality tomato used for commercial production with excellent transportation ability and extended keeping characteristics. An excellent choice for home gardens, farmer's markets, market growers, and open field production. Disease Resistant: V, F, A, St, TMV. Determinate.



TM630-10 - Siletz Tomato Seeds

52 days. *Solanum lycopersicum*. Open Pollinated. Siletz Tomato. This early maturing plant produces high yields of 10 to 12 oz deep red tomatoes. They are sweet and flavorful. Perfect for salads, sandwiches, and canning. Plants will yield well even in cool weather. Cold Tolerant. It is parthenocarpic, meaning it can set tomatoes without pollination. An excellent choice for home gardens and greenhouses. A variety was developed in 1994 by Dr. James Baggett of Oregon State University, Oregon, USA. Disease Resistant: V, F. Determinate.



TM898-10 - SteakHouse Tomato Seeds

75 days. *Solanum lycopersicum*. (F1) SteakHouse Tomato. The plant produces high yields of 3 to 4 lb red beefsteak tomatoes. It has a rich old-fashioned tomato flavor. Perfect for salads, slicing, and sandwiches. This is the World's Largest Beefsteak Tomato! Impress your neighbors by growing a humongous-sized tomato in your backyard garden. The plant requires support, either staking or cages. An excellent choice for home gardens. Disease Resistant: V, F. Indeterminate.



TM849-20 - Summer Pick Tomato

75 days. *Solanum lycopersicum*. (F1) The plant produces high yields of 11 oz red beefsteak tomatoes. They are very flavorful. Perfect for salads, slicing, burgers, and sandwiches. Suitable for containers, patios, or small gardens where space is very limited! An excellent choice for home gardens. Disease Resistant: V, FFF, St, TSWV. Determinate.



TM290-10 - Suncherry Tomato

58 days. *Solanum lycopersicum*. (F1) This early maturing plant produces heavy yields of ½ to ¾ oz bright red cherry tomatoes. They are very sweet and flavorful with thin skin. Perfect for salads and snacks. Grows in clusters of 20. An excellent choice for home gardens and market growers. Disease Resistant: V, F, St, TMV. Indeterminate.



TM127-20 - Sungold Tomato Seeds

57 days. *Solanum lycopersicum*. (F1) Sungold Tomato. This early maturing plant produces heavy yields of ¾ to 1 oz tangerine-orange cherry tomatoes. They are very sweet, juicy, fruity, and extremely flavorful with thin skin. One of the sweetest cherry tomatoes on the market with a high Brix count of 9-10. Winner of the prestigious British Horticultural Society Award of Garden Merit. Perfect for salads, garnishes, or culinary creations. It has a good shelf life too. Kids love them! Grows in clusters of 10 to 15 on grape-like trusses. The plant can grow as tall as 10 feet and requires support, either staking or cages. Suitable for greenhouse production. An excellent choice for home gardens, market growers, and greenhouse production. Disease Resistant: V, FF, N, TMV. Indeterminate.



TM754-20 - Sunkeeper Tomato

72 days. *Solanum lycopersicum*. (F1) This early maturing plant produces high yields of 12 oz red tomatoes. They are sweet and flavorful. Perfect for salads, slicing, and sandwiches. The plant produces up to 20% more tomatoes than comparable varieties. Not only does it do well in Florida and other Southeastern states, but it also does well in Mountainous regions. A good quality tomato is used for commercial production. Excellent choice for home gardens, market growers, and open field production. Disease Resistant: V, FFF, St, CR. Determinate.



TM291-20 - Sunny Goliath Tomato

70 days. *Solanum lycopersicum*. (F1) This early maturing plant produces good yields of 7 to 8 oz yellow tomatoes. They are very sweet, juicy, and flavorful. It turns from bright yellow to gold when mature, but can be harvested when yellow. This is a great tomato variety for those who don't like the highly acidic taste of most red tomatoes. Perfect for salads, garnishes, or culinary creations. Always a great seller at Farmer's Markets! An excellent choice for home gardens and market growers. Disease Resistant: V, F, N. Indeterminate.



TM447-20 - Sunray Tomato

75 days. *Solanum lycopersicum*. Open Pollinated. The plant produces heavy yields of 8 to 10 oz golden-orange tomatoes. They are very sweet, meaty, and very flavorful. It has a rich full tomato flavor. Perfect for salads, slicing, sandwiches, and for making sauces. Also known as Golden Sunray Tomato. It is a cross between a Pan American and a Jubilee tomato. The plant has good foliage protecting tomatoes from sun-scald. Produces well even in hot, dryer growing regions. Heat Tolerant. Drought Tolerant. An excellent choice for home gardens and market growers. An heirloom variety was developed in 1950 by Dr. W. S. Porte at the USDA Station at Beltsville, Maryland, USA. United States Department of Agriculture, PI 270249. Disease Resistant: V, FF. Indeterminate.



TM129-20 - Super Beefsteak Tomato Seeds

80 days. *Solanum lycopersicum*. Open Pollinated. Super Beefsteak Tomato. The plant produces high yields of 17 oz red beefsteak tomatoes. It has a rich full tomato flavor. Perfect for sandwiches, burgers, salads, and slicing. Crack Resistant. An excellent choice for home gardens and market growers. Disease Resistant: V, F, N. Indeterminate.



TM253-10 - Super Bush Tomato

70 days. *Solanum lycopersicum*. (F1) This early maturing plant produces high yields of 5 to 6 oz red tomatoes. They are sweet and flavorful. Perfect for salads, slicing, and sandwiches. The plant has good foliage protecting tomatoes from sun-scald. Suitable for containers, patios, or small gardens where space is very limited! An excellent choice for home gardens. Disease Resistant: V, F, N. Determinate.



TM203-10 - Super Fantastic Tomato

70 days. *Solanum lycopersicum*. (F1) This early maturing plant produces high yields of 10 oz red beefsteak tomatoes. They are juicy, meaty, and very flavorful. Perfect for salads, slicing, sandwiches, salsas, drying, and canning. The plant requires support, either staking or cages. Plants produce 60 lbs of tomatoes. Excellent choice for home gardens and market growers. Disease Resistant: V, F, N. Indeterminate.



TM262-20 - Super Marmande Tomato Seeds

68 days. *Solanum lycopersicum*. Open Pollinated. Super Marmande Tomato. This early maturing plant produces high yields of 10 to 16 oz red beefsteak tomatoes. They are very sweet, meaty, juicy, and flavorful. Perfect for sandwiches, burgers, salads, slicing, and canning. An excellent choice for home gardens. An heirloom from France. Disease Resistant: V, F, A. Semi-Determinate.



TM637-20 - Supersonic Tomato

75 days. *Solanum lycopersicum*. (F1) The plant produces heavy yields of 8 to 12 oz red tomatoes. They are sweet and flavorful. Perfect for salads, slicing, sandwiches, and canning. Suitable for the Northeast region of the United States. Crack Resistant. An excellent choice for home gardens, farmer's markets, and market growers. Disease Resistant: V, F. Indeterminate.



TM132-20 - SuperSweet 100 Tomato Seeds

65 days. *Solanum lycopersicum*. (F1) SuperSweet 100 Tomato. This early maturing plant produces high yields of 1 oz red cherry tomatoes. They are super sweet, very flavorful, and extra high in Vitamin C. Perfect for fresh eating right off the vine or in salads. One of the best-tasting bite-sized cherry tomatoes! The plant produces hundreds of cherry tomatoes in clusters. The plant requires support, either staking or cages. An excellent choice for home gardens, farmer's markets, and market growers. Disease Resistant: V, F, N. Indeterminate.



TM819-20 - Supremo Tomato

68 days. *Solanum lycopersicum*. (F1) This early maturing plant produces high yields of 5 to 6 oz bright red Roma tomatoes. They have thick walls, are meaty, and are very flavorful. Perfect for salads, salsas, making sauce, puree, paste, and canning. It has a long shelf life. Heat Tolerant. Suitable for containers, patios, or small gardens where space is very limited! An excellent choice for home gardens and market growers. Disease Resistant: V, FFF, N, BS, TSWV. Determinate.



TM133-20 - Sweet Chelsea Tomato Seeds

65 days. *Solanum lycopersicum*. (F1) Sweet Chelsea Tomato. This early maturing plant produces high yields of ¾ to 1 oz red cherry tomatoes. They are very sweet and flavorful. Perfect for salads, and snacks. Grows in clusters of 15 to 20. The plant requires support, either staking or cages. Drought Tolerant. Crack Resistant. An excellent choice for home gardens and market growers. Disease Resistant: V, FF, N, TMV. Indeterminate.



TM135-20 - Sweet Million Tomato Seeds

65 days. *Solanum lycopersicum*. (F1) Sweet Million Tomato. This early maturing plant produces heavy yields of ½ to ¾ oz red cherry tomatoes. They are very sweet and flavorful. Perfect fresh eating right off the vine or in salads. Winner of the Royal Horticultural Society Award of Garden Merit. It has impressive disease resistance. The plant produces over 500 cherry tomatoes! Crack Resistant. The plant requires support, either staking or cages. An excellent choice for home gardens and market growers. Disease Resistant: V, FF, N, St, TMV, ToMV. Indeterminate.



TM760-20 - Tasti Lee Tomato

75 days. *Solanum lycopersicum*. (F1) The plants produce high yields of 6 to 9 oz red tomatoes. They are very sweet and flavorful. It has a rich full tomato flavor. Perfect for salads, slicing, sandwiches, salsa, and sauce. It also has higher lycopene - up to 40% more than other varieties! It has an extended shelf life. It was developed in Florida to withstand high temperatures. Heat Tolerant. Always a great seller at Farmer's Markets! Good-quality tomatoes are used for commercial production. Excellent choice for home gardens, market growers, and open field production. Dr. Jay Scott developed a variety at the University of Florida. Disease Resistant: V, FFF, St. Determinate.



TM846-20 - Tidy Treats Tomato

55 days. *Solanum lycopersicum*. (F1) This early producing plant produces high yields of ¾ to 1 oz bright red cherry tomatoes. Perfect fresh eating right off the vine or in salads. Grows in clusters. Suitable for containers, patios, or small gardens where space is very limited! Excellent choice for home gardens. Disease Resistant: V, F. Determinate.



TM524-20 - Torbay Tomato Seeds

75 days. *Solanum lycopersicum*. (F1) Torbay Tomato. The plant produces good yields of 6 to 8 oz pink tomatoes. They are mild, meaty, juicy, and flavorful. A very beautiful tomato that is perfect for salads, garnishes, or culinary creations. Low acidity variety. Always a great seller at Farmer's Markets! Excellent choice for home gardens and market growers. Disease Resistant: V, FF. Determinate.



TM639-5 - Trust Tomato Seeds

78 days. *Solanum lycopersicum*. (F1) Trust Tomato. The plant produces high yields of 8 to 10 oz bright red beefsteak tomatoes. They are very sweet, firm, and flavorful. Perfect for salads, slicing, and sandwiches. One of the best greenhouse tomatoes in the United States. Suitable for hydroponics gardening. It has an extended shelf life and stores well. An excellent choice for home gardens, greenhouses, and market growers. Disease Resistant: V, FF, FCRR, LM, TMV. Indeterminate.



TM565-10 - Tumbling Tom Yellow Tomato Seeds

63 days. *Solanum lycopersicum*. Open Pollinated. Tumbling Tom Yellow Tomato. This early maturing plant produces high yields of 1 to 2 oz yellow cherry tomatoes. They are very sweet and flavorful. Perfect fresh eating right off the vine or in salads. Produces up to 4 lbs of tomatoes per plant. It is ideal for hanging baskets. Suitable for container gardening, patios, hanging baskets, window boxes, and small gardens where space is very limited! Disease Resistant: V, F, N. Determinate.



TM865-20 - Tye-Dye Orange Tomato Seeds

65 days. *Solanum lycopersicum*. (F1) Tye-Dye Orange Tomato. This early maturing plant produces high yields of 7 oz bi-colored bright yellow-orange tomatoes with a blush of red both inside and outside. They are mildly sweet and flavorful. Perfect for salads, garnishes, or culinary creations. An excellent choice for home gardens. Disease Resistant: V, F, A. Indeterminate.



TM384-10 - Ultimate Opener Tomato Seeds

57 days. *Solanum lycopersicum*. (F1) Ultimate Opener Tomato. This early maturing plant produces high yields of 8 oz bright red tomatoes. They are very sweet, juicy, and flavorful. They are so sweet and juicy that you can't stop eating them. Some gardeners say it is one of the best tasting tomatoes! Perfect for salads, slicing, and sandwiches. The best early season opening tomato in the world! These tomatoes are a third larger than the Early Girl tomato. Crack Resistant. A variety was developed by Dr. Paul Thomas, the same plant breeder who developed Better Boy and pioneered Early Girl Hybrid tomatoes. An excellent choice for home gardens and market growers. Disease Resistant: V, F. Indeterminate.



TM640-10 - Ultra Boy II Tomato

68 days. *Solanum lycopersicum*. (F1) This early maturing plant produces good yields of 8 to 14 oz red tomatoes. It has a rich old-fashioned tomato flavor. Perfect for salads, slicing, and sandwiches. Grows in clusters. The plant requires support, either staking or cages. An excellent choice for home gardens and market growers. Disease Resistant: V, F, N. Indeterminate.



TM600-20 - Uva Roja Tomato

85 days. *Solanum lycopersicum*. (F1) The plant produces heavy yields of ¾ oz red grape tomatoes. They are very sweet and flavorful. Perfect fresh eating right off the vine or in salads. Grows in clusters of 7 to 9. It makes a nice presentation selling them on trusses or packed fruit. Always a great seller at Farmer's Markets! Excellent choice for home gardens and market growers. Disease Resistant: V, TMV. Indeterminate.



TM282-20 - Viva Italia Tomato Seeds

75 days. *Solanum lycopersicum*. (F1) Viva Italia Tomato. The plant produces high yields of 3 to 4 oz deep red Roma tomatoes. They have thick walls, are meaty, and are very flavorful. Perfect in salads, for making paste, sauce, salsa, tomato soup, ketchup, canning, and freezing. It sets fruit much better in hot weather than other Roma varieties. Heat Tolerant. An excellent choice for home gardens and market growers. Disease Resistant: V, FF, N, A, BS. Determinate.



TM159-20 - Willamette Tomato

75 days. *Solanum lycopersicum*. Open Pollinated. The plant produces high yields of 4 to 7 oz red tomatoes. They are very sweet and flavorful. Perfect for salads, slicing, and sandwiches. Low acidity variety. Crack-Resistant. Suitable for Northwest regions, Canada, New York, and Michigan. An excellent choice for home gardens. An heirloom variety was developed in the 1950s by Dr. Frazier at Oregon State University, Oregon, USA. United States Department of Agriculture, PI 645394. Disease Resistant: V, F. Determinate.



TM292-20 - Window Box Roma Tomato

70 days. *Solanum lycopersicum*. (F1) This early maturing plant produces high yields of 2 to 3 oz red pear-shaped tomatoes. They are sweet and flavorful. Perfect for salads and for making sauce and paste. It has an extended shelf life and stores well. Suitable for containers, patios, or small gardens where space is very limited! Excellent choice for home gardens. Disease Resistant: V, F, N. Determinate.



TM801-20 - Yaqui Tomato

75 days. *Solanum lycopersicum*. (F1) The plant produces high yields of 3 to 4 oz red plum-shaped tomatoes. They are very sweet and flavorful. Perfect for salads, salsa, and making sauce, puree, and paste. This variety stands out for both quality and quantity. An excellent choice for home gardens and market growers. Disease Resistant: V, FF, N, A. Determinate.



TM105-20 - Yellow Pear Tomato

75 days. *Solanum lycopersicum*. Open Pollinated. The plant produces high yields of 2 to 4 oz bright yellow pear-shaped tomatoes. Perfect for salads and sauces. Serve alongside the red pear tomato to make a very attractive dish. Perfect for summer party hors d'oeuvres. This is one of the prettiest tomatoes in the garden. It's beautiful in salads! Grows in clusters of 6 to 9. Crack Resistant. The plant requires support, either staking or cages. Always a great seller at Farmer's Markets! An excellent choice for home gardens and market growers. A pre-1800s heirloom variety from the USA. United States Department of Agriculture, PI 303810. Disease Resistant: V, F, A, LB. Indeterminate.



TM574-10 - Zebra Cherry Tomato

60 days. *Solanum lycopersicum*. (F1) This early maturing plant produces high yields of 1 oz bi-colored dark red tomatoes with green stripes. They are very sweet and flavorful. Perfect fresh eating right off the vine or in salads. Suitable for container gardening, patios, hanging baskets, and small gardens where space is very limited! Excellent choice for home gardens. Disease Resistant: V, FF. Determinate.

