

Lettuce

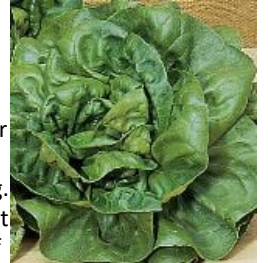
LC45-750 - All Year Round Lettuce

65 days. Lactuca sativa. Open Pollinated. The plant produces good yields of medium green butterhead lettuce. It is crisp and flavorful. This variety can be sown in most locations from March through August for a nearly year-round harvest. Slow to bolt. Does well in hot and cold weather! The very reliable plant does well even in dry weather. Cold Tolerant. Heat Tolerant. Drought Tolerant. Suitable for greenhouse production. An excellent choice for home gardens, greenhouses, market growers, and open field production. A pre-1870s heirloom variety. United States Department of Agriculture, PI 536694.



LC2-750 - Bibb Lettuce

57 days. Lactuca sativa. Open Pollinated. The plant produces excellent yields of smooth dark green heads of lettuce. It is crisp and delicious. This butterhead variety is known for its taste and texture. Great in salads and garnishes. Suitable for hydroponics gardening. Excellent choice for home gardens and market growers. Lt. John B. Bibb served in the War of 1812 and represented Logan County in the Kentucky House of Representatives, and the state Senate from 1827 to 1834. He was also an amateur horticulturist and developed the Bibb lettuce we know and love today. An heirloom variety. United States Department of Agriculture, PI 536697.



LC26-750 - Black Seeded Simpson Lettuce Seeds

45 days. Lactuca sativa. Open Pollinated. Black Seeded Simpson Lettuce. This early maturing plant produces excellent yields of leaf-type lettuce. Very flavorful and of superb quality. This is one of the most popular leaf lettuce varieties on the market. Its frilled crumpled leaves are crisp, tender, and very flavorful. The crisp leaves are perfect for salads and garnishes. Can grow as baby lettuce in 28 days. It grows best in cool weather. It withstands heat, drought, and light frost. Slow to bolt. Cold Tolerant. Heat Tolerant. Drought Tolerant. Excellent choice for home gardens. An heirloom variety dating back to 1850. United States Department of Agriculture, PI 536700. Disease Resistant: DM, LD, TB.



LC55-750 - Bronze Guard Lettuce

70 days. Lactuca sativa. Open Pollinated. The plant produces excellent yields of beautiful bronze/green oak leaf-type lettuce. It stays flavorful, even when other lettuce is starting to get bitter. Does well in most regions and climates. Perfect for salads, garnishes, and gourmet dishes. Excellent choice for home gardens.



LC5-750 - Buttercrunch Lettuce

1963 All-America Selections Winner!

65 days. Lactuca sativa. Open Pollinated. The plant produces high yields of dark green butterhead lettuce. It has a mild buttery-flavored taste with no bitterness. The broad green leaves are delicious, but the best part is the heart of loosely folded leaves and thick, crisp, tender ribs. Great for salads and garnishes. Heat Tolerant. Slow to bolt. Suitable for greenhouse production. An excellent choice for home gardens, greenhouses, and market growers. Developed by George Raleigh of Cornell University, Ithaca, New York, USA. United States Department of Agriculture, PI 536804.



LC11-750 - Cimmaron Lettuce

65 days. Lactuca sativa. Open Pollinated. The plant produces excellent yields of beautiful red romaine lettuce. Leaves are loosely folded on heads. Perfect for salads and garnishes. One of the slowest to bolt lettuce on the market. Good for spring, summer, and fall planting as it's cold-hardy and also tolerates heat. Cold Tolerant. Heat Tolerant. An 18th-century heirloom variety. An excellent choice for home gardens.



LC57-750 - Freckles Lettuce

55 days. *Lactuca sativa*. Open Pollinated. This early-maturing plant produces excellent yields of flavorful green romaine lettuce splashed with red speckles. Perfect for Caesar salads and garnishes. Harvest in 28 days for gourmet salads. Heat Tolerant. Bolt Tolerant. An excellent choice for home gardens and specialty market growers. An heirloom variety from the USA.



LC4-750 - Gourmet Salad Blend Lettuce Seeds

70 days. *Lactuca sativa*. Open Pollinated. Gourmet Salad Blend Lettuce. The plant produces excellent yields of a mixture of gourmet leaf lettuce. A special blend of light green, dark green, and red lettuce. Perfect for sandwiches, salads, and garnishes. A very popular market seller blend that takes all the planning out of what to grow to satisfy your customers. Excellent choice for home gardens and specialty market growers.



LC28-750 - Grand Rapids Lettuce

45 days. *Lactuca sativa*. Open Pollinated. This early maturing plant produces high yields of large bright green leaf-type lettuce. Leaves are frilled, crinkled, and crisp. Perfect for sandwiches, salads, and garnishes. This is a quick-growing variety. Heat Tolerant. Slow to bolt. Suitable for greenhouse production. Excellent choice for home gardens, greenhouses, market growers, and open field production, and hydroponics gardening. An heirloom variety dating back to 1898. United States Department of Agriculture, PI 536719. Disease Resistant: TB, V.



LC17-750 - Great Lakes 118 Lettuce Seeds

1944 All-America Selections Winner!

75 days. *Lactuca sativa*. Open Pollinated. Great Lakes 118 Lettuce. The plant produces high yields of large crisphead lettuce. This very early strain of the Great Lakes Lettuce is used mainly in California for harvest during warmer months. The standard for commercial growers for decades. Excellent flavor. The crisp leaves are perfect for sandwiches, salads, and garnishes. Very well adapted to hot and adverse conditions. Heat Tolerant. Excellent choice for home gardens, market growers, and open field production. A 1948 heirloom variety developed by Associated Seed Growers, New Haven, Connecticut, USA. United States Department of Agriculture, PI 536810. Disease Resistant: TB.



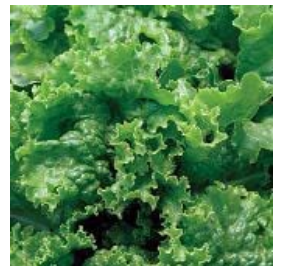
LC53-750 - Great Lakes Mesa 659 Lettuce

83 days. *Lactuca sativa*. Open Pollinated. The plant produces high yields of large crisphead lettuce. It is stronger, larger, and more uniform than other Great Lakes varieties. One of the most widely planted of all the Great Lake types by commercial growers. This is the type you find in your grocery stores. Very flavorful. The crisp leaves are perfect for sandwiches, salads, and garnishes. Perfect for fall planting as it is resistant to cold damage. Does well in the South and Southwest regions. Resistant to sunburn. Very slow to bolt! Heat Tolerant. Excellent choice for home gardens, market growers, and open field production. United States Department of Agriculture, PI 536733. Disease Resistant: TB, TMV.



LC29-750 - Green Ice Lettuce

45 days. *Lactuca sativa*. Open Pollinated. This early maturing plant produces high yields of glossy dark green loose-leaf type lettuce. Leaves are frilled, crinkled, and crisp. It is among the earliest, yet lasts well into summer, thanks to superior heat tolerance. Heat Tolerant. You can have multiple harvests with this variety. Slow to bolt. Perfect for salads and garnishes. Excellent choice for home gardens. An heirloom was developed by Burpee in the 1960s. United States Department of Agriculture, PI 536848.



LC37-750 - Hanson Improved Lettuce

80 days. *Lactuca sativa*. Open Pollinated. The plant produces good yields of very large crisphead lettuce. Very crisp, sweet, and flavorful. The crisp leaves are perfect for sandwiches, salads, and garnishes. This high-quality thrives in cooler weather. Also known as Gardener's Favorite Lettuce or King of the Market Lettuce. Excellent choice for home gardens and market growers. A pre-1855 heirloom variety. United States Department of Agriculture, PI 536738.



LC38-750 - Ithaca Lettuce

72 days. *Lactuca sativa*. Open Pollinated. The plant produces good yields of crisphead lettuce. The crisp leaves are perfect for sandwiches, salads, and garnishes. It has long been an industry standard for Eastern commercial growers because of its quality. Also great for Southern growers too as a fall crop. Slow to bolt. Excellent choice for home gardens, market growers, and open field production. Developed by Dr. Minotti of Cornell University, Ithaca, New York, USA. United States Department of Agriculture, PI 536843. Disease Resistant: BR, BRib, TB.



LC7-750 - Lollo Rosa Lettuce

53 days. *Lactuca sativa*. Open Pollinated. This early maturing plant produces excellent yields of flavorful leaf-type lettuce. Leaves are green with frilly red edges tips. Perfect for sandwiches, salads, and garnishes. Slow to bolt. Excellent choice for home gardens and specialty market growers.



LC63-750 - Mesclun Mix Lettuce

30 days. *Lactuca sativa*. Open Pollinated. This early maturing plant produces a flavorful mixture of lettuce and tender greens. A special blend of light green, dark green, and red lettuce and greens. Perfect for salads, pasta, soups, stir-fry, and garnishes. Plant indoors or out. This mix is intended to be harvested continuously for a ready supply of fresh and tender greens. Clip it with scissors and it will regrow. Suitable for hydroponics gardening. An excellent choice for home gardens.



LC39-750 - New York 12 Lettuce

1963 All-America Selections Winner!

60 days. *Lactuca sativa*. Open Pollinated. The plant produces good yields of large crisphead lettuce. The crisp leaves are delicious and perfect for sandwiches, salads, and garnishes. A heat-resistant variety that is excellent for fall crops in the South. It is tolerant to stress, poor soils, and bolting in the summer heat. Heat Tolerant. It was introduced in the 1960s by Cornell University. Good shipper variety for commercial growers. Excellent choice for home gardens, market growers, and open field production. United States Department of Agriculture, PI 190235. Disease Resistant: TB.



LC31-750 - Parris Island Cos Lettuce Seeds

72 days. *Lactuca sativa*. Open Pollinated. Parris Island Cos Lettuce. The plant produces excellent yields of flavorful dark green lettuce. The leaves are tender, crisp, and thick with a sweet flavor. Perfect for Caesar salads and garnishes. Suitable for hydroponics gardening. Excellent choice for home gardens and market growers. An heirloom variety dating back to 1949 that was named after the island of the same name off the South Carolina coast. Developed by the Clemson College's Agricultural Experimental Station, Charleston, South Carolina, USA. United States Department of Agriculture, PI 665200. Disease Resistant: LMV, TB.



LC6-750 - Prizehead Lettuce

45 days. *Lactuca sativa*. Open Pollinated. This early maturing plant produces heavy yields of crisphead lettuce. The inner leaves are green and the outer leaves are reddish-brown. It is crisp, sweet, and tender, never bitter. The delicious leaves are perfect for salads and garnishes. Slow to bolt. Suitable for hydroponics gardening. An excellent choice for home gardens and market growers. An heirloom variety dating back to 1873. United States Department of Agriculture, PI 536757. Disease Resistant: TMV.



LC16-750 - Red Sails Lettuce Seeds

1985 All-America Selections Winner!

45 days. *Lactuca sativa*. Open Pollinated. Red Sails Lettuce. This early maturing plant produces excellent yields of delicately crumpled bronze-red leaf lettuce. Excellent flavor. The leaves are perfect for sandwiches, salads, and garnishes. Extremely high in vitamins. One of the slowest bolting red lettuce varieties on the market. Grows well all season but really colors up spectacularly in the fall. Excellent choice for home gardens and market growers. United States Department of Agriculture, PI 601060.



LC33-750 - Ruby Red Lettuce

1958 All-America Selections Winner!

53 days. *Lactuca sativa*. Open Pollinated. This early maturing plant produces good yields of red leaf lettuce. This is a very heat-tolerant variety. Slow to bolt. Color does not fade in hot weather. Perfect for salads and garnishes. Adds color to salads. Heat Tolerant. Always a great seller at Farmer's Markets! Excellent choice for home gardens. An heirloom dating back to 1958. United States Department of Agriculture, PI 536761.



LC22-750 - Salad Bowl Green Lettuce Seeds

1952 All-America Selections Winner!

44 days. *Lactuca sativa*. Open Pollinated. Salad Bowl Green Lettuce. This early maturing plant produces excellent yields of flavorful green leaf lettuce. As outer leaves are picked, inner leaves keep producing. Ideal for hot weather as it is slow to bolt. Perfect for salads and garnishes. Suitable for containers. Excellent choice for home gardens. An heirloom variety. United States Department of Agriculture, PI 536762.



LC23-750 - Salad Bowl Red Lettuce

44 days. *Lactuca sativa*. Open Pollinated. This early maturing plant produces excellent yields of flavorful red leaf lettuce. As outer leaves are picked, inner leaves keep producing. Perfect for salads and garnishes. Slow to bolt. Excellent choice for home gardens. An heirloom dating back to 1955. United States Department of Agriculture, PI 536760.



LC40-750 - Salinas Lettuce

75 days. *Lactuca sativa*. Open Pollinated. The plant produces high yields of crisphead lettuce. A good standard shipper variety for commercial growers. Heat Tolerant. Cold Tolerant. Resistant to bolting. Salinas is known as the Lettuce Capital of the World! An excellent choice for home gardens, market growers, and open field production. Disease Resistant: LMV, TB.



LC19-750 - Simpson Elite Lettuce

45 days. *Lactuca sativa*. Open Pollinated. This early maturing plant produces excellent yields of flavorful leaf lettuce. The leaves are crumpled with curled outer leaves. Very attractive. One of the slowest bolting and earliest growing varieties on the market. Ideal for spring, early summer, and fall harvest. Drought Tolerant. Perfect for salads and garnishes. An excellent choice for home gardens and market growers. United States Department of Agriculture, PI 584330.



LC62-750 - Slobolt Lettuce

48 days. *Lactuca sativa*. Open Pollinated. This early maturing plant produces excellent yields of very flavorful lettuce. The outer leaves may be picked off as it grows. It has a delightful crispness and mild flavor and is never bitter. Grows even in hot weather! Heat-Tolerant. Slow to bolt. Suitable for greenhouse production and outdoor planting. Excellent choice for home gardens, greenhouses, market growers, and open field production. An heirloom dating back to 1946. United States Department of Agriculture, PI 536764.



LC43-750 - Tango Lettuce

45 days. *Lactuca sativa*. Open Pollinated. This early maturing plant produces excellent yields of dark green color leaf lettuce. It resembles Endive in appearance. This variety is rich in vitamins and has a tangy flavor. Perfect for salads and garnishes. Excellent choice for home gardens and market growers. United States Department of Agriculture, PI 667708.



LC44-750 - Waldman's Green Lettuce

50 days. *Lactuca sativa*. Open Pollinated. This early maturing plant produces excellent yields of light green frilled leaf lettuce. It tolerates cold weather well. Slow to bolt. Suitable for hydroponics gardening. Waldman's Green is highly productive lettuce that is the standard for commercial growing. Excellent choice for home gardens, greenhouses, market growers, and open field production. United States Department of Agriculture, PI 536769. Disease Resistant: TB.



LC65-750 - Wayahead Lettuce

68 days. *Lactuca sativa*. Open Pollinated. The plant produces good yields of butterhead lettuce. Leaves are flavorful green, smooth, and soft. Also known as Way-A-Head Lettuce and Burpee's Wayahead Lettuce. Excellent choice for home gardens and market growers. An heirloom variety dating back to 1908. United States Department of Agriculture, PI 536770.



LC49-750 - White Boston Lettuce

72 days. *Lactuca sativa*. Open Pollinated. The plant produces good yields of butterhead lettuce. Very flavorful with a buttery taste. This is an improved version of the Big Boston. It grows higher off the ground, so no bottom rot. Does well in hot weather. Excellent choice for home gardens and market growers. An heirloom variety dating back to the 1930s. United States Department of Agriculture, PI 612637.

