

## Cuttings/Bouquet Flowers

### [FL153-25 - African Marigold Flowers \(Inca II Gold\)](#)

Annual. *Tagetes erecta*. (F1) This dwarf plant produces enormous blossoms of 4" diameter gold-colored Marigold flowers. The Inca II blooms 7 to 10 days earlier than other Marigold varieties and repels water more easily and avoids bloom rot. Perfect for floral cuttings, flower beds, borders, and containers. An excellent choice for home gardens and for sale at farmer's markets,



### [FL5-100 - Asters Flowers \(Crego Mixed\)](#)

Annual. *Callistephus chinensis*. Open Pollinated. The plant produces colorful shades of pink and white flowers. They will continue blooming until frost. A good choice for an ornamental garden. Blossoms are produced on long strong stems, making it a perfect variety for cut flowers for vase arranging! An excellent variety for borders, rock gardens, and containers.



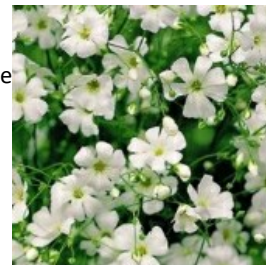
### [FL111-25 - Autumn Beauty Sunflowers](#)

Annual. *Helianthus annuus*. Open Pollinated. The plant produces a stunning display of radiantly 8" flowers in deep yellow, gold, brick red, orange, and burgundy. This is an edible flower in which flower buds can be fried and the petals used as a garnish in salads and desserts; the flavor is bittersweet. An excellent choice for cut flowers. Great food source for small birds. Enjoy the beauty of fall colors throughout the summer. Flowers bloom over a long period. A variety from the United States of America.



### [FL100-100 - Baby's Breath Flowers](#)

Annual. *Gypsophila elegans*. The plant produces colorful blossoms of delicate white flowers. Excellent for dried floral arrangements and in rock gardens.



### [FL6-100 - Bachelor Button Flowers \(Dwarf Mixed\)](#)

Annual. *Centaurea cyanus*. The plant produces very colorful and attractive flowers. This hardy annual has shades of blue, pink, and white on long straight stems. One of the most popular wildflower varieties in the United States. Excellent variety for cuttings and dried bouquets. Also known as Coneflower.



### [FL97-100 - Bells of Ireland Flowers](#)

Annual. *Molucella laevis*. The plant produces colorful blossoms of apple green bell-shaped flowers. This is an excellent choice for cut flower arrangements.



### [FL1-100 - Black Eyed Susan Flowers](#)

Perennial. *Rudbeckia hirta*. Open Pollinated. The plant produces colorful sunny yellow flowers with deep brown center cone. This much-loved wildflower has long-lasting flowers and continuous flowers year after year. Excellent for rock gardens, borders, and cut flowers.



### [FL51-100 - Blanketflower Flowers](#)

Perennial. *Gaillardia aristata*. Plant produces colorful blossoms of large daisy like flowers with bicolor red and yellow petals. Makes excellent cut flowers. Drought Tolerant.







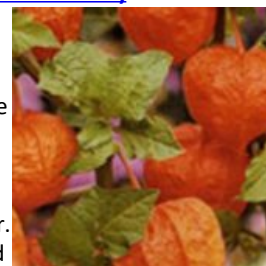
**FL82-100 - Carnation Flowers (Chabaud Mixed)**

Perennial. Dianthus caryophyllus. Open Pollinated. The plant produces colorful blossoms of violet, red, pink, purple, yellow, and orange blooms! Carnations are one of the most popular flowers. This variety is sought for its long season of bloom.



**FL118-100 - Chinese Lantern Flowers (Franchetti)**

Perennial. Physalis alkekengi. Open Pollinated. The plant produces a beautiful stunning array of large papery bright-orange lantern-shaped flowers. The plant has lush green leaves. The small white flowers are followed by orange fruit encased in a papery, bright orange lantern shaped flower. Very easy to grow. Makes long-lasting dried flowers.



**FL10-100 - Cleome Flowers (Rose Queen)**

Annual. Cleome hassleriana. Plant produces colorful blossoms of pink flowers. This annual has pink blooms and rose colored buds. A popular choice for gardeners looking to attract birds. Suitable for flower cuttings. A very easy variety to grow, but seeds can be slow to germinate. For best germination results, it is recommended to use the cold stratification process prior to planting. Heat and Drought Tolerant.



**FL128-100 - Cosmos Flowers (Bright Lights Mix)**

Annual. Cosmos sulphureus. Open Pollinated. The plant produces colorful blossoms of daisy-like flowers. This mixture has beautiful orange, yellow, and red flowers. It blooms early and keeps blooming from early summer until frost. Excellent for flower arrangements. The plant thrives in poor soil. Heat Tolerant.



**FL11-100 - Cosmos Flowers (Sensation Mix)**

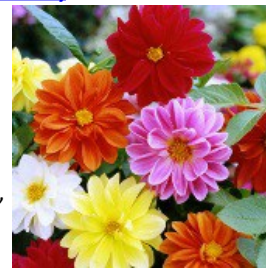
1936 All-America Selections Winner!

Annual. Cosmos bipinnatus. Open Pollinated. The plant produces colorful blossoms of daisy-like flowers. This annual has shades of pink, rose, and white flowers. Excellent for flower arrangements. The plant thrives in poor soil. Heat Tolerant.



**FL136-100 - Dahlia Flowers (Unwin's Mixed)**

Annual. Dahlia variabilis. Open Pollinated. The plant produces a rainbow of colorful flowers. Lovely and compact plants have orange, violet, red, yellow, and white flowers. A beautiful variety for cut flowers. Suitable for containers, pots, small gardens, patios, and borders/rock gardens. A variety from the USA.



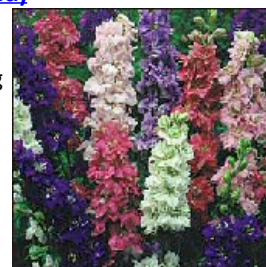
**FL2-100 - Delphinium Flowers (Pacific Giants Mixed)**

Perennial. Delphinium elatum. Plant produces colorful blossoms of large colorful flowers. This perennial has shades of pink, purple, and white flowers. Blooms in mid June to July. Excellent for borders and suitable for cuttings.



**FL14-100 - Larkspur Flowers (Tall Mixed)**

Annual. Delphinium consolida. Open Pollinated. The plant produces eye-catching blossoms of flowers. This annual has pink, purple, and blue flowers. Excellent for fresh flower arrangements.



**FL142-50 - Statice Flowers (QIS Dark Blue)**

Annual. Limonium sinuate. Plant produces colorful blossoms of dark blue flowers with strong thin stems. A good variety for fresh cut and dried flowers. Excellent for flower arrangements.



**FL143-50 - Statice Flowers (QIS Pale Blue)**

Annual. Limonium sinuate. Open Pollinated. The plant produces colorful blossoms of pale blue flowers with strong thin stems. A good variety for a fresh cut and dried flower. Excellent for flower arrangements.





**[FL23-50 - Sunflower Flowers \(Dwarf Teddy Bear\)](#)**

Annual. Helianthus annuus. This variety produces colorful blossoms of small 4" to 6" flowers. This sunflower has large golden orange blossoms with short stems. Excellent for fresh bouquets and flower arrangements. As adorable as a toy Teddy Bear.



**[FL18-100 - Zinnia Flowers \(California Giant Mixed\)](#)**

Zinnia elegans. Annual. Open Pollinated. The plant produces colorful blossoms of quarter-size flowers. Suitable for borders and colorful gardens. Ideal for cut flowers! This annual continuously blooms all season.



**[FL124-100 - Zinnia Flowers \(Lilliput Mixed\)](#)**

Annual. Zinnia elegans. Open Pollinated. The plant produces colorful blossoms of round flowers in various crayon colors. This variety will add interest and texture to your garden. Excellent flower arrangements too! This annual continuously blooms all season.



**[FL95-25 - Zinnia Flowers \(Whirligig Mixed\)](#)**

Annual. Zinnia elegans. Open Pollinated. The plant produces colorful blossoms of bicolor flowers, including yellow-crimson, red-white, pink-white, cream-rose, bronzed-red, and many other nice colors. This annual continuously blooms all season. Great for bouquets and cut flowers.

