



ReimerSeeds.com Electronic Catalog
Category: Ground Cherry

Copyright 2003 Reimer Seeds, Inc. All rights reserved.

No part of this catalog (including photos and images) may be reproduced, stored in a retrieval system, or transmitted in any form, electronically, mechanical, photocopying, without prior written permission.
Reimer Seeds, The Pepper Store, and Total Garden Solution are Trademarks owned by Reimer Seeds, Inc. 2003.

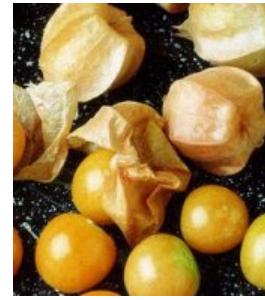
TL11-20 - Cape Gooseberry Ground Cherry

90 days. Physalis peruviana. Plant produces good yields of ground cherry which are enclosed in papery husk. They turn to yellow-orange and fall off the plant when mature. Stores for several months while in husk. The ground cherry can be eaten raw, dried, preserved, and stewed. Also used in salads, pies, cakes, sauces, jams, and jellies. A variety from Namibia, Africa. United States Department of Agriculture, PI 232077. Plant Height: 48" tall. pk/20



TL7-20 - Yellow Husk Ground Cherry

70 days. Physalis peruviana. Plant produces high yields of flavorful 1" to 2" diameter ground cherries. It has a strawberry like flavor and are enclosed in a protective tan husk. Excellent for making preserves and jams. This variety does well in dry regions. pk/20



TL9-20 - Aunt Molly's Ground Cherry



Certified Organic

70 days. Physalis peruviana. Plant produces heavy yields of flavorful ground cherries. This ground cherry is one of the sweetest and most fruitiest tasting around, and turn from green to golden orange when mature. Excellent for making jam or pies. Stores well up to 3 months in the husk. A variety from Poland. Certified Organic. pk/20