



## Biennials

### [HB180-100 - Angelica](#)

Angelica archangelica. Biennial. Plant produces leaves and stalks that are sweet tasting. The roots are used to fight infection, to improve energy, and to stimulate circulation. pk/100



### [HB153-100 - Banquet Parsley](#)

90 days. Petroselinum crispum. Biennial. Semi-compact plant produces flavorful curled dark green leaves. This is one of the finest varieties on the market. Excellent in salads, sauces, soups, and stews. Can be dried or used fresh. It shows good cold tolerance in late fall and over wintered plantings. pk/100



### [HB36-100 - Bronze & Green Fennel](#)

90 days. Foeniculum vulgare. Biennial. Plant produces very flavorful bronze-red and dark green feathery leaves. Excellent to spruce up salads and great fresh herb for cooking. Slow bolting and non-bulbing variety. Certified Organic. pk/100



### [HB177-10 - Cancer Bush](#)

Lessertia frutescens. Perennial. Plant produces aromatic leaves used to treat cancer. It has red orange flowers that appear in spring. The leaves are very aromatic. Currently in clinical trials for treatment of cancer and AIDS. Infusion made from the leaves is a traditional remedy for fever, chicken pox, flu, rheumatism, hemorrhoids, diarrhea, and stomach and liver problems. Also used as an excellent wash for wounds. A variety from southern Africa. pk/10



**Plant Height:** 3 ft tall.

**Plant Height:** 5 ft tall.

## EVO PDF Tools Demo

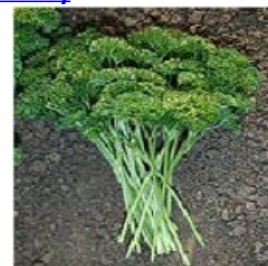
### [HB18-100 - Caraway](#)

Carum carvi. Biennial. Plant produces flavorful seeds and leaves used in breads, coleslaw, soups, meat dishes, and cheese. Also said to aid in indigestion. The seeds can be used as flavoring in bread, cake and apple pie. The young leaves are used in salads and soups. The mature leaves are eaten like spinach. The roots are boiled and eaten like potatoes or added to soups. Seeds can be sowed in autumn. pk/100



### [HB110-100 - Champion Moss Curled Parsley](#)

80 days. Petroselinum crispum. Biennial. Plant produces bright green parsley leaves. Excellent for drying, garnishes, soups, and salads. Standard popular strain for home gardens and market growers. pk/100



**Plant Height:** 2 ft tall.

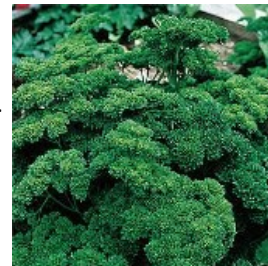
### [HB89-100 - Clary](#)

65 days. Salvia scarea. Biennial. Plant produces beautiful and distinctive scented flowers that makes it an excellent plant for potpourris or cut flowers. Also used for making scented oils. Very attractive plant for herb and flower garden. Also known as Clary Sage. pk/100



### [HB174-100 - Double Curled Parsley](#)

70 days. Petroselinum crispum. Biennial. Plant produces good yields of dense dark green finely crumpled closely curled leaves. Excellent for flavoring and garnishes. Suitable for home gardens and market growers. Frost tolerant. pk/100



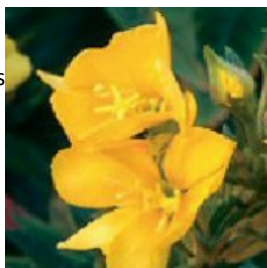


## ELECTRONIC CATALOG

### [HB104-100 - Evening Primrose](#)

85 days. *Oenothera biennis*. Biennial. Plant produces clear yellow blossoms which opens and disperses fragrant odor into the moon night air. Reported to be used in many medical uses including PMS. Roots can be eaten as a vegetable and the shoots as a salad. Suitable for landscaping too. pk/100

**Plant Height:** 4 ft tall.



### [HB172-100 - Evergreen Parsley](#)

70 days. *Petroselinum crispum*. Biennial. Plant produces heavy yields of dark green curled leaves. It is more frost resistant than other varieties. Adds color to soup, salads, and gourmet dishes. Also can be used as a garnish. Suitable for home gardens and market growers. pk/100



### [HB37-100 - Florence Fennel](#)

80 days. *Foeniculum vulgare*. Biennial. Plant produces very flavorful large bulbs that are crisp and flavorful. Excellent to season sauces and sausage, or cooked and sauteed as a vegetable. Served fresh in salads, sauces, fish and egg dishes. pk/100

Lot No: 10342

Germination: 85%

Test Date: 12/15



### [HB56-100 - Forest Green Parsley](#)

75 days. *Petroselinum crispum*. Biennial. Plant produces bright green aromatic curled leaves. It stays dark green all summer. Adds color to soup, salads, and gourmet dishes. Also can be used as a garnish. pk/100

**Plant Height:** 1 ft tall.



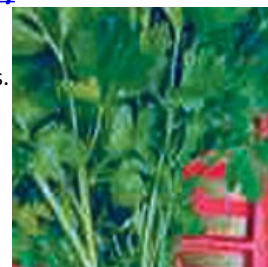
### [HB151-100 - Giant Italian Parsley](#)

85 days. *Petroselinum crispum*. Biennial. Plant produces massive thick stalks and rich flavor dark green leaves. This is an Italian flat leaf variety that has richer flavor than curled Parsley. Excellent in salads, sauces, soups, and stews. Can be dried or used fresh. A variety from Italy. pk/100



### [HB149-100 - Gigante Catalogno Parsley](#)

78 days. *Petroselinum crispum*. Biennial. Plant produces rich flavor dark green leaves. This is an Italian flat leaf variety that has richer flavor than curled Parsley. Can be dried or used fresh. A variety from Italy. pk/100



### [HB74-100 - Hamburg Rooted Parsley](#)

85 days. *Petroselinum crispum*. Biennial. Plant produces large, edible roots that are smooth, white, and have a mild parsley flavor. Easy to grow. Used by many European cooks as a savory ingredient for soups and stews. pk/100

**Plant Height:** 2 ft tall.



### [FZ14 - Herbs Alive Organic Fertilizer](#)

An organic fertilizer that helps produce stronger plants and bigger crops. Apply a tablespoon of Herbs Alive twice each season for healthier plants. Side dress Herbs Alive after seedlings emerge, then use it as a side-dressing when plants start active growth. Research has shown that Herbs Alive produces 150% greater yield than without any feeding. It is great for all types of herbs! Your plants will produce more blossoms, set higher yields, and produce larger plants. Package: 1 lb



**HB57-100 - Italian Dark Green Parsley**

78 days. Petroselinum crispum. Biennial. Plant produces rich flavor shiny dark green flat leaves. It has more flavor than curled varieties. Excellent drying variety that has strong parsley taste and crisp stems. pk/100

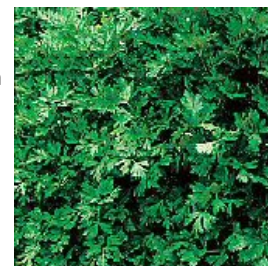
**Plant Height:** 2 ft tall.



**HB160-100 - Italian Flat Leaf Parsley**

78 days. Petroselinum crispum var neapolitanum. Biennial. Plant produces rich flavor dark green leaves. Excellent drying variety that has strong parsley taste and crisp stems. The most popular variety for use as a seasoning. Repels asparagus beetles. Certified Organic. pk/100

**Plant Height:** 1 ½ ft tall.



**HB124-100 - Moss Curled Parsley**

70 days. Petroselinum crispum. Biennial. Plant produces high yields of very dark green curled leaves. It grows so thickly that the plant resembles a bunch of moss. Excellent for drying and use as a garnish. pk/100

**Plant Height:** 1 ft tall.



**HB178-100 - Plain Parsley (Single Italian)**

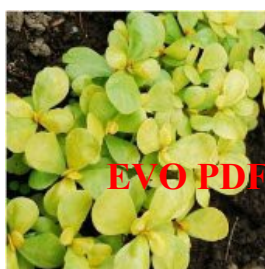
78 days. Petroselinum crispum. Biennial. Plant produces rich curled dark green parsley leaves. The Italian parsley has plain flat curled leaves. Excellent drying variety that has strong parsley taste and crisp stems. pk/100

**Plant Height:** 1 ½ ft tall.



**HB187-100 - Purslane (Golden)**

60 days. Portulaca oleracea. Perennial. Low growing plant produces golden colored leaves. Used in salads and can also be steamed or added to soups, stews, and is a great addition in stir-fry. It also makes an attractive garnish too. Purslane is also effective in treatment for oral lichen planus and its leaves are used to treat insect or snake bites on the skin, boils, sores, pain from bee stings, bacillary dysentery, diarrhea, hemorrhoids, postpartum bleeding, and intestinal bleeding. Plant grows in poor soil and tolerates drought. pk/100



**HB137-50 - Sweet Fennel**

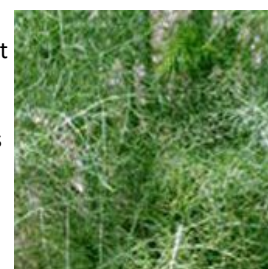
80 days. Foeniculum vulgare. Biennial. Plant that produces very flavorful leaves. Used in salads, or cooked with oily fish, salads, vegetables, soups, and stews. Fennel tea is given to infants for its calming and anti-flatulent effects. Non-bulb variety. Pick leaves in summer when needed. pk/100

**Plant Height:** 2 ft tall.

Lot No: E3030

Germination: 85%

Test Date: 07/14



**HB167-100 - Tripled Curled Parsley**

70 days. Petroselinum crispum. Biennial. Plant produces flavorful dark green leaves that are closely curled variety. This is the most popular variety used for garnishes and seasoning. Excellent in salads, sauces, soups, and stews. Can be dried or used fresh. This is a fast growing variety. pk/100

