

Salsa Tomato

[TM256-10 - Big Mama Tomato](#)

80 days. Solanum lycopersicum. (F1) Plant produces heavy yields of 5" long by 3" wide red plum shaped tomatoes. They are very flavorful, very meaty, and have very few seeds. This variety is easy to peel and core. One of the best varieties for making Italian paste and sauce, soups, and salsa. Excellent choice for home gardens. Indeterminate.



[TM15-20 - Black Plum Tomato](#)

82 days. Solanum lycopersicum. Open Pollinated. Plant produces good yields of 2 to 4 oz deep mahogany to black-brown plum shaped tomatoes. They are very sweet and flavorful. One of the best tasting black plum shaped tomatoes on the market. Perfect for making dark red paste and spaghetti sauce. Also great in salads, for drying, and for making salsa. Crack resistant. Cold tolerant. Excellent choice for home gardens and market growers. A heirloom from Russia. United States Department of Agriculture, G 33011. Indeterminate.



[TM17-20 - Bonny Best Tomato](#)

72 days. Solanum lycopersicum. Open Pollinated. Plant produces heavy yields of 8 to 10 oz red tomatoes. It has the rich old-fashioned tomato flavor and often judged as one of the 5 best tasting tomatoes! They are solid and meaty. It became one of the most respected canning varieties in America in the first half of the twentieth century. Also great for sandwiches, salads, slicing, salsas, and sauces. Suitable for Northern regions. Grows in clusters of 6 to 8 tomatoes. Excellent choice for home gardens, market growers, and open field production. A heirloom variety from the USA. United States Department of Agriculture, PI 639208. Disease Resistant: V, F, N. Indeterminate.



[TM787-10 - Charger Tomato](#)

72 days. Solanum lycopersicum. (F1) Early maturing plant produces high yields of 10 to 14 oz brilliant red tomatoes. Perfect for sandwiches, salads, salsas, and slicing. They adapt to a large range of climates and temperatures. Crack resistant. Good quality tomato used for commercial production. Excellent choice for home gardens and market growers. Disease Resistant: V, FFF, A, St, TYLCV. Determinate.



[TM869-10 - Coyote Tomato](#)

65 days. Solanum lycopersicum. Open Pollinated. Early maturing plant produces high yields of ¼ to ½ oz creamy ivory-yellow cherry tomatoes. It is sweet and very flavorful. Perfect for eating fresh right off the vine, in salads, and for garnishes. They grow in clusters of 6 to 8. Crack resistant. Plant produces hundreds to even a few thousand tomatoes on a single plant. Excellent choice for home gardens. A heirloom variety from Vera Cruz, Mexico. Indeterminate. Certified Organic.



[TM305-20 - Cream Sausage Tomato](#)

76 days. Solanum lycopersicum. Open Pollinated. Bush type plant produces high yields of 2 to 3 oz creamy white to light yellow sausage shaped tomatoes. They are very sweet. Perfect for salads, garnishes, or for making salsa, or yellow tomato paste and sauce. Grows in clusters of 6. Suitable for container gardening. Because of the volume of tomatoes plant produces, up to 60 pounds of fruit per plant, to maximize yield potential, either stake or use cages. Excellent choice for home gardens. A variety from the USA. Determinate





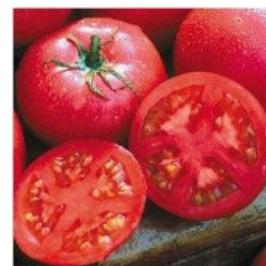
TM752-20 - Early Doll Tomato

55 days. Solanum lycopersicum. (F1) Early variety produces heavy yields of 4 to 5 oz bright red tomatoes. They have excellent flavor. Perfect for sandwiches, salads, slicing, and salsa. Every home garden should have an early maturing tomato and this is one you must try! Excellent choice for home gardens. Disease Resistant: V, F. Determinate.



TM166-20 - Eva Purple Ball Tomato

70 days. Solanum lycopersicum. Open Pollinated. Early maturing plant produces high yields of 6 to 8 oz deep pink tomatoes. They are sweet, juicy, smooth, round, and very delicious. Perfect for salads, sandwiches, salsas, canning, and sauces. Very easy to peel. A great all purpose tomato with excellent flavor. Does extremely well in hot and humid regions. Crack Resistant. Excellent choice for home gardens. An 1800s heirloom variety from the Black Forest Region of Germany. Disease Resistant: LB. Indeterminate.



TM585-20 - Fantom Tomato

70 days. Solanum lycopersicum. (F1) Plant produces good yields of 7 oz bright red tomatoes. It is extra firm and very flavorful. Perfect for salsa, salads, and cooking. A great storage variety. It maintains its delicate taste and flavor for months - even until Christmas! Grows well in most conditions even in those hard-to-grow places! Excellent choice for home gardens and market growers. Disease Resistant: V, FF. Determinate.



TM231-20 - Federle Tomato

85 days. Solanum lycopersicum. Open Pollinated. Plant produces high yields of 7" long bright red banana shaped tomatoes. Tomato has the full rich tomato flavor and very few seeds. Excellent for making paste, puree, and heavy sauces. Also good for making salsa. Excellent choice for home gardens. A heirloom from West Virginia, USA. Indeterminate.



TM839-10 - Giallo de Summer Tomato

75 days. Solanum lycopersicum. Open Pollinated. Plant produces good yields of 6 to 10 oz bright yellow beefsteak tomatoes. They are very sweet, juicy, and flavorful. Perfect for sandwiches, salads, and slicing. Suitable for growing in hot, humid areas. Heat tolerant. Excellent choice for home gardens. Indeterminate.



TL16-20 - Gigante Tomatillo

100 days. Physalis ixocarpa. Open Pollinated. Plant produces good yields of giant 4" diameter green tomatillos. This is the biggest tomatillo on the market. It is ripe when it falls from plant. Very popular in the Southwest United States for making salsas when combined with fresh hot peppers. Excellent choice for home gardens and market growers.



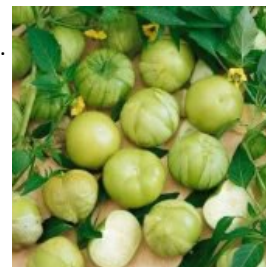
TM525-10 - Golden Rave Tomato

67 days. Solanum lycopersicum. (F1) Plant produces high yields of 1 to 2 oz golden yellow tomatoes. Perfect for adding color to salads and salsa. Grows in clusters. Low acidity variety. Crack resistant. Plant requires support, either staking or cages. Excellent choice for home gardens. Disease Resistant: F, TMV. Indeterminate.



TL13-20 - Grande Rio Verde Tomatillo

90 days. Physalis ixocarpa. Open Pollinated. Plant produces heavy yields of 3 oz green tomatillos. Mexican husk tomato for salsa verde. Tomatillos are fully ripe when it falls from plant. Very popular in the Southwest United States for making salsas when combined with fresh hot peppers. Suitable for home garden and market growers.





TM713-20 - Green Giant Tomato

85 days. Solanum lycopersicum. Open Pollinated. Plant produces good yields of 12 to 18 oz green tomatoes. They are smooth, beautiful, and have a spicy flavor. They are very sweet, juicy, and flavorful. Perfect for sandwiches, salads, slicing, and salsa. It stays pure green even when mature. The most productive and best tasting variety in test trials. A potato leaf variety. Crack resistant. Plant requires support, either staking or cages. Excellent choice for home gardens. Indeterminate.



TL6-20 - Green Husk Tomatillo

90 days. Physalis ixocarpa. Open Pollinated. Plant produces excellent yields of 2" wide tomatillo. The green fruit is inside a green papery husk. The fruit are ripe when they burst through the husk. Mix with hot peppers to make Mexican green sauce. Also used to make salsa and other Mexican dishes. Washed thoroughly with mild soap to remove the sticky coating on the outside of the fruits. Excellent choice for home gardens and market growers. A variety from Mexico. Indeterminate. Certified Organic.



TM500-20 - Green Sausage Tomato

78 days. Solanum lycopersicum. Open Pollinated. Plant produces good yields of 3 oz, 4" long, bi-colored green sausage shaped tomatoes with yellow stripes. The flesh is a kiwi-like green color. It has the rich old-fashioned tomato flavor. Perfect for making a great green color tomato paste and sauce, salads, salsas, and gourmet dishes. Grows in clusters of 6 to 8. To maximize yield potential, either stake or use cages. Also known as Green Sleeves Tomato. Excellent choice for home gardens. Determinate.



TM57-20 - Green Zebra Tomato

75 days. Solanum lycopersicum. Open Pollinated. Plant produces high yields of 2 to 4 oz bi-colored lime green tomatoes with dark green stripes. The flesh is bright green. It has the rich old-fashioned tomato flavor. Perfect for sandwiches, salads, slicing, canning, fried green tomatoes, salsas, stews, and making a delicious green tomato sauce. A favorite tomato of many high class chefs. When the yellow tint appears, it's time to harvest. Crack resistant. Heat tolerant. Excellent choice for home gardens and specialty market growers. A variety developed by Tom Wagner of Washington State, USA. Indeterminate.



TM60-10 - Heinz 1439 Tomato

75 days. Solanum lycopersicum. Open Pollinated. Plant produces heavy yields of 6 oz red tomatoes. This variety was developed by Heinz for making ketchup, puree, and sauces. Perfect processing and canning variety. Also great for sandwiches, salads, and slicing. Crack resistant. Excellent choice for home gardens, market growers, and open field production. These seeds originated from tomato plants grown from HEINZ 1439. United States Department of Agriculture, PI 341137. Disease Resistant: V, F, A. Determinate.



TM202-10 - Hungarian Italian Tomato

80 days. Solanum lycopersicum. Open Pollinated. Plant produces heavy yields of 2 to 3 oz red pear shaped tomatoes. They have superb flavor. This variety is definitely one of the best varieties for making salsas, paste, sauces, or for canning. Grows in clusters of 4 tomatoes. Excellent choice for home gardens. Determinate.





TM216-20 - Italian Giant Beefsteak Tomato

85 days. Solanum lycopersicum. Open Pollinated. Plant produces high yields of 1 lb deep red beefsteak tomatoes. They are very sweet, meaty, juicy, and flavorful. Perfect for salads, sandwiches, salsas, sauces, and Italian dishes. Plant requires support, either staking or cages. Excellent choice for home gardens. A variety heirloom variety from Italy brought over 80 years ago. Indeterminate.



TM467-20 - Jersey Devil Tomato

80 days. Solanum lycopersicum. Open Pollinated. Plant produces high yields of 4 to 6" long bright red tomatoes. They are shaped like banana peppers! They are meaty and juicy with very few seeds. Perfect for making sauces, paste, and salsas. Excellent choice for home gardens. A heirloom variety from Tomato Seed Company of Metuchen, New Jersey, USA. United States Department of Agriculture, PI 639214. Indeterminate.



TM70-20 - Jubilee Tomato

1943 All-America Selections Winner!

80 days. Solanum lycopersicum. Open Pollinated. Plant produces high yields of 8 to 12 oz bright golden-orange tomatoes. They have thick wall, are meaty, and have a mild flavor. Perfect for salads, salsas, cooking, canning and making tomato juice. Adds bright color to salads. It is a cross between Tangerine and Rutgers tomato. Also known as Golden Jubilee Tomato. Low acidity variety and high in Vitamin C. Plant requires support, either staking or cages. Always a great seller at Farmer's Markets! Excellent choice for home gardens and market growers. A heirloom variety from the Maule Seed Company of Philadelphia, USA. United States Department of Agriculture, PI 452018. Disease Resistant: A. Indeterminate.



TM76-20 - Lemon Boy Tomato

72 days. Solanum lycopersicum. (F1) Early maturing plant produces high yields of 8 oz bright lemon yellow tomatoes. It is an eye-catching tomato with wonderful color and flavor. They are sweet and mild, meaty, juicy, and flavorful. Excellent for salads, slicing, salsas, and gourmet dishes. Plant requires support, either staking or cages. Excellent choice for home gardens. Disease Resistant: V, F, N, A, St. Indeterminate.



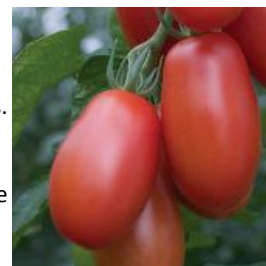
TM717-20 - Lime Green Salad Tomato

58 days. Solanum lycopersicum. Open Pollinated. Early maturing plant produces good yields of 3 to 5 oz lime green tomatoes that ripen to an amber color. They have a spicy, juicy, and tangy flavor. Perfect for sandwiches, salads, salsas, and slicing. Also known as Green Elf Tomato. Suitable for container gardening. Excellent choice for home gardens. A variety developed by Tom Wagner of Washington, USA. Determinate.



TM414-10 - Little Mama Tomato

70 days. Solanum lycopersicum. Open Pollinated. Early maturing plant produces heavy yields of 3 to 4 oz red roma tomatoes. They are meaty, juicy, and flavorful. Perfect for making salsa, sauce, puree, and paste. Grows in clusters. Excellent choice for home gardens. Indeterminate.



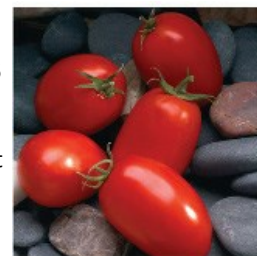
TM838-10 - Little Napoli Tomato

63 days. Solanum lycopersicum. (F1) Early maturing plant produces high yields of 2 to 2 1/2 oz bright red pear shaped tomatoes. It has the rich tomato flavor. They are very sweet, meaty, and juicy. Perfect for canning, and making rich tomato sauce, salsa, soup, or ketchup. Perfect for container gardening, patios, hanging baskets, or small gardens where space is very limited! Excellent choice for home gardens. Disease Resistant: V, F. Determinate.



TM511-20 - Mariana Tomato

74 days. Solanum lycopersicum. (F1) Early maturing plant produces high yields of 4 to 6 oz bright red tomatoes. A saladette type tomato widely used because of its good smoothness and uniform ripening. Also great choice for canning, salsas, sauces and tomato juice. It is well suited for mature green and vine ripe harvesting and performs well on ground and staked culture. The plants are strong, medium compact and produce high yields of smooth extra-large and large, high quality fruit with very good uniformity, firmness and shelf life. Heat tolerant. Suitable for commercial growers. Excellent choice for home gardens, market growers, and open field production. Disease Resistant: V, FF, N, A, St. Determinate.



TM409-20 - Martino's Roma Tomato

75 days. Solanum lycopersicum. Open Pollinated. Plant produces heavy yields of 2 to 3 oz red plum shaped tomatoes. They are meaty with few seeds. Perfect for canning and making salsa, sauce, and paste. Tomatoes tend to fall off the plant when ripe. Excellent choice for home gardens and market growers. A heirloom variety from Italy. Disease Resistant: EB. Determinate. Certified Organic.



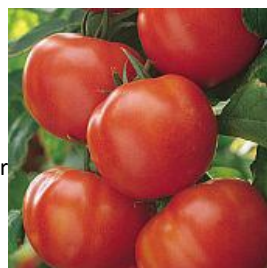
TM833-10 - Marzineria Tomato

75 days. Solanum lycopersicum. (F1) Plant produces heavy yields of 2 to 3 oz bright red roma tomatoes. Perfect for canning, cooking and making salsa, sauce, and paste. This is a new addition to the popular Heirloom Marriage series. They are a cross between Cream Sausage and San Marzano. Excellent choice for home gardens. Indeterminate.



TM340-20 - Matina Tomato

58 days. Solanum lycopersicum. Open Pollinated. Early maturing plant produces good yields of 2 to 4 oz red tomatoes. The taste is so good and it normally wouldn't be found in huge beefsteak varieties. Perfect for canning, salads, salsa, slicing, sandwiches, and sauce. The fact is that it ripens up to a full month earlier than many beefsteak varieties. It is a very early producing variety that bears continuously throughout the season. It does well in cool summer nights regions like the Pacific Northwest. Plant has good foliage protecting tomatoes from sun scald. Grows in clusters. A potato leaf variety. Suitable for hydroponics gardening. Excellent choice for home gardens. A heirloom variety from Germany. Indeterminate.



TM475-10 - MiRoma Tomato

70 days. Solanum lycopersicum. (F1) Early maturing plant produces heavy yields of 5 oz deep red roma tomatoes. They have thick wall, are meaty, and flavorful. Perfect for salsa and making sauce. Excellent choice for home gardens and market growers. Disease Resistant: V, FF, N. Determinate.





TM893-10 - Mochomo Tomato

85 days. Solanum lycopersicum. (F1) Plant produces high yields of 5 to 6 oz dark red roma tomatoes. They have thick wall, are meaty, and are flavorful. Perfect for salsa, sauces, and canning. Plant has good foliage protecting tomatoes from sun scald. Does extremely well in the Southwest and Southern regions of the United States and in Mexico. Strong compact plant can be cultivated in the greenhouse year round and also suitable for open field production. Excellent choice for home gardens, greenhouses, market growers, and open field production. Disease Resistant: V, FFF, TMV, TSWV, TYLCV. Indeterminate.



TM295-20 - Napoli Tomato

79 days. Solanum lycopersicum. Open Pollinated. Plant produces heavy yields of 3 to 6 oz red Italian paste-type tomatoes. They are very sweet, meaty, juicy, and flavorful. Perfect for making sauce, ketchup, and paste. Also great for salads, slicing, sandwiches, soups, stir fries, canning, and freezing. Excellent choice for home gardens. United States Department of Agriculture, PI 355110. Determinate.



TM731-10 - Oaxacan Jewel Tomato

85 days. Solanum lycopersicum. Open Pollinated. Plant produces good yields of 6 to 16 oz bi-colored yellow beefsteak tomatoes with red streaks. It is one of the most strikingly beautiful bi-colored tomatoes. It is gorgeous when sliced open to reveal the brilliant red marbling within. The tomato has a fruity flavor. Perfect for salads, slicing, salsa, and sandwiches. Also known as Joya de Oaxaca Tomato. Excellent choice for home gardens and market growers. A heirloom from Oaxacan, Mexico. Indeterminate. Certified Organic.



TM98-20 - Orange Strawberry Tomato

75 days. Solanum lycopersicum. Open Pollinated. Plant produces high yields of 8 to 16 oz deep orange tomatoes. They a meaty, rich tomato taste, and very few seeds. One of the most perfect heart shape of any tomato variety known. Perfect for salads, slicing, sandwiches, garnishes, canning, sauce, or culinary creations. Excellent choice for home gardens. A heirloom variety from the USA. United States Department of Agriculture, G 33040. Indeterminate.



TM580-20 - Pear Goliath Tomato

90 days. Solanum lycopersicum. (F1) Plant produces high yields of 5 to 8 oz red tomatoes. It is one the largest saladette varieties measuring 4" long. Perfect for hamburgers, salsa, salads, cooking, and roasting. Excellent choice for home gardens. Disease Resistant: V, FF. Determinate.



TL2-20 - Pineapple Tomatillo

70 days. Physalis ixocarpa. Open Pollinated. Plant produces good yields of tomatillos. It has a fruity taste that is similar to that of pineapple. Excellent for making a wonderful salsa. The small, cherry size fruit turn from green to yellow-gold when mature. They are surrounded by a papery husk that turns from green to brown as they ripen and splits open when they are ready to harvest. Certified Organic.



TM804-10 - Plum Regal Tomato

76 days. Solanum lycopersicum. (F1) Plant produces high yields of 3 to 4 oz deep red plum tomatoes. It has a bright red interior and a superior flavor. Perfect for making tomato sauce, paste, salsa, and canning. Plant has good foliage protecting tomatoes from sun scald. Crack resistant. Excellent choice for home gardens and market growers. Disease Resistant: V, FF, EB, LB, TSWV. Determinate.



TL8-20 - Purple de Milpa Tomatillo

70 days. Physalis ixocarpa. Open Pollinated. Plant produces good yields of small to medium size tomatillos. This variety was grown unattended in a corn fields by a family in Mexico. It stores fresh for several weeks. Excellent for making salsa. They are surrounded by a papery husk that turns from green to brown as they ripen and splits open when they are ready to harvest. A heirloom variety from Mexico. Certified Organic.





TM304-20 - Purple Russian Tomato

75 days. Solanum lycopersicum. Open Pollinated. Plant produces high yields of 5 to 7 oz purplish-red plum tomatoes. They are meaty and very flavorful. One of the best tasting purplish-red tomatoes. Perfect for salads, slicing, salsa, sauce, puree, paste, and canning. Also known as Ukrainian Purple Tomato. Crack resistant. Always a great seller at Farmer's Markets! Excellent choice for home gardens and specialty market growers. A heirloom variety from Ukraine. Indeterminate.



TM383-20 - Red Ponderosa Tomato

85 days. Solanum lycopersicum. Open Pollinated. Plant produces high yields of 1 lb red beefsteak tomatoes. They are very sweet, meaty, juicy, and flavorful with few seeds. It has the rich old-fashioned tomato flavor. Perfect for salads, slicing, sandwiches, and canning. Low acidity variety. Excellent choice for home gardens. A heirloom variety. United States Department of Agriculture, PI 634828. Indeterminate.



TM426-20 - Rio Grande Tomato

80 days. Solanum lycopersicum. Open Pollinated. Plant produces high yields of 6 to 8 oz red pear shaped tomatoes. They have thick wall, are meaty, and have a mild flavor. Perfect for salads, salsas, and making sauces, puree, paste and tomato juice. An excellent processing variety. One of the best paste tomatoes available for hot climates. It withstands extremes in temperature, both hot and cool. Excellent choice for home gardens, market growers, and open field production. A variety developed by the The University of California to thrive in hot and humid weather. United States Department of Agriculture, PI 644794. Disease Resistant: V, FF, A. Determinate.



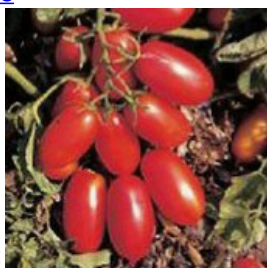
TM299-20 - Roman Candle Tomato

85 days. Solanum lycopersicum. Open Pollinated. Plant produces good yields of 5 oz yellow banana shaped tomatoes. They are very flavorful and have very few seeds. Perfect for making salsa, sauce, and culinary creations. Always a great seller at Farmer's Markets! Excellent choice for home gardens and market growers. United States Department of Agriculture, PI 639216. Indeterminate. Certified Organic.



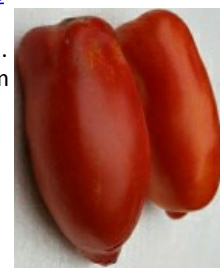
TM661-20 - San Marzano Nano Tomato

85 days. Solanum lycopersicum. Open Pollinated. Plant produces good yields of 2 to 3 oz red tomatoes. They have thick walls, are meaty, and very flavorful. Perfect for salsas, salads, and for making sauce, puree, paste, and canning. Plant has good foliage protecting tomatoes from sun scald. Always a great seller at Farmer's Markets! Excellent choice for home gardens and market growers. A variety from Italy. Determinate.



TM321-10 - San Marzano Redorta Tomato

78 days. Solanum lycopersicum. Open Pollinated. Plant produces good yields of large 8 oz red plum shaped tomatoes. They have thick walls, are meaty, and very flavorful. It is much larger than the San Marzano. Perfect for making salsa, sauce, puree, paste, and canning. It is named after a mountain, Pizzo Redorta in Bergamo. Excellent choice for home gardens. A heirloom variety from Tuscany, Italy. Indeterminate.





TM152-20 - San Marzano Tomato

80 days. Solanum lycopersicum. Open Pollinated. Plant produces heavy yields of 4 to 5 oz bright red tomatoes. They have thick walls, are meaty, and very flavorful. Perfect for making salsa, sauce, puree, paste, drying, and canning. It is known as the greatest sauce tomato in the world. Crack resistant. Low acidity variety. Plant requires support, either staking or cages. Excellent choice for home gardens. A heirloom variety from Italy. United States Department of Agriculture, PI 237137. Indeterminate.



TM445-20 - San Marzano Tomato (Determinate)

80 days. Solanum lycopersicum. Open Pollinated. Plant produces heavy yields of 4 to 5 oz bright red tomatoes. They have thick walls, are meaty, and very flavorful. Perfect for making salsa, sauce, puree, paste, drying, and canning. It is known as the greatest sauce tomato in the world. Crack resistant. Low acidity variety. Plant requires support, either staking or cages. Excellent choice for home gardens. A heirloom variety from Italy. Determinate.



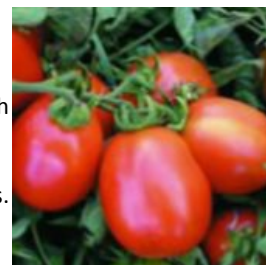
TM587-20 - Sanibel Tomato

75 days. Solanum lycopersicum. (F1) Plant produces high yields of 8 to 12 oz red tomatoes. They are sweet and flavorful. Perfect for salsa, salads, slicing, sandwiches, and cooking. Heat tolerant. It has long shelf life. Always a great seller at Farmer's Markets! Excellent choice for home gardens and market growers. Disease Resistant: V, FF, N, A, St. Determinate.



TM541-20 - Saucey Tomato

85 days. Solanum lycopersicum. Open Pollinated. Plant produces heavy yields of 3 oz red plum shaped tomatoes. It has the rich tomato flavor. They are sweet, meaty, and very flavorful with very few seeds. Perfect for making sauces, puree, paste, and salsas. They are easy to pick and peel. The tomatoes can be easily shaken from the plants when mature. Grows in clusters. Excellent choice for home gardens. A heirloom variety developed by Dr. James R. Baggett in 1993 at Oregon State University, Oregon, USA. Disease Resistant: BER. Determinate.



TM284-20 - Scotia Tomato

60 days. Solanum lycopersicum. Open Pollinated. Early maturing plant produces high yields of 4 oz bright red tomatoes. They are sweet and flavorful. Perfect for sandwiches, salads, slicing, salsas, sauces, tomato juice, and canning. Cold tolerant. Excellent choice for home gardens. A variety developed by the Dominion Experiment Farm, Kentville, Nova Scotia, Canada. United States Department of Agriculture, PI 279817. Determinate.



TM558-20 - Sungella Tomato

70 days. Solanum lycopersicum. Open Pollinated. Early maturing plant produces high yields of 2 oz orange tomatoes. They are very sweet, juicy, and flavorful. Perfect for salads, salsas, sauces, drying, garnishes, or culinary creations. Cold tolerant. Low acidity variety. This is the dehybridized version. Suitable for greenhouse production. Always a great seller at Farmer's Markets! Excellent choice for home gardens, greenhouses, and market growers. Indeterminate.



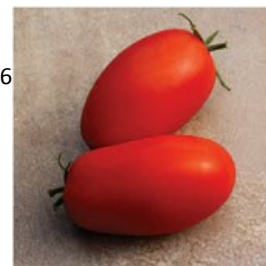
TM203-10 - Super Fantastic Tomato

70 days. Solanum lycopersicum. (F1) Early maturing plant produces high yields of 10 oz red beefsteak tomatoes. They are juicy, meaty, and very flavorful. Perfect for salads, slicing, sandwiches, salsas, drying, and canning. Plant requires support, either staking or cages. Plants produce 60 lbs of tomatoes. Excellent choice for home gardens and market growers. Disease Resistant: V, F, N. Indeterminate.



TM819-20 - Supremo Tomato

68 days. Solanum lycopersicum. (F1) Early maturing plant produces high yields of 5 to 6 oz bright red roma tomatoes. They have thick walls, are meaty, and very flavorful. Perfect for salads, salsas, making sauce, puree, paste, and canning. It has a long shelf life. Heat tolerant. Suitable for containers, patios, or small gardens where space is very limited! Excellent choice for home gardens and market growers. Disease Resistant: V, FFF, N, BS, TSWV. Determinate.



TM760-10 - Tasti Lee Tomato

75 days. Solanum lycopersicum. (F1) Plants produces high yields of 6 to 9 oz red tomatoes. They are very sweet and flavorful. It has the rich full tomato flavor. Perfect for salads, slicing, sandwiches, salsa, and sauce. It also has a higher lycopene - up to 40% more than other varieties! It has extended shelf life. It was developed in Florida to withstand high temperatures. Heat tolerant. Always a great seller at Farmer's Markets! Good quality tomato used for commercial production. Excellent choice for home gardens, market growers, and open field production. A variety developed by Dr. Jay Scott at the University of Florida, Florida, USA. Disease Resistant: V, FFF, St. Determinate.



TM452-20 - Taxi Tomato

65 days. Solanum lycopersicum. Open Pollinated. Early maturing plant produces heavy yields of 4 to 6 oz bright yellow tomatoes. They are mild, meaty, juicy, and flavorful. Perfect for salads, slicing, sandwiches, salsas, garnishes, or culinary creations. One of the best yellow tomato for short season regions. Low acidity variety. Does well in hot and humid regions. Suitable for containers, patios, or small gardens where space is very limited! Excellent choice for home gardens. Determinate. Certified Organic.



TM848-20 - Ten Fingers of Naples Tomato

75 days. Solanum lycopersicum. Open Pollinated. Plant produces heavy yields of 3 oz red roma tomatoes. Tomatoes grow 5 to 6" in length! They have thick walls, are meaty, and very flavorful. Perfect for making sauce, puree, paste, salsa, cooking, and canning. One of the best tasting paste tomato. Also known as Dix Doights de Naples Tomato. Grows in clusters. Excellent choice for home gardens. A heirloom variety from Naples, Italy. Determinate.



TM417-10 - Thai Pink Egg Tomato

75 days. Solanum lycopersicum. Open Pollinated. Plant produces good yields of 1 to 2 oz brilliant pink egg shaped tomatoes. It is the same size and shape of a chicken egg. It starts out a creamy white and turns a pink color when mature. They are very sweet and flavorful. Perfect for salads, salsas, garnishes, vegetable platters, or culinary creations. It has extended shelf life and stores well. Crack resistant. Does well in hot humid climates. Excellent choice for home gardens and specialty market growers. A heirloom variety from Thailand dating back to the 1950s. Indeterminate. Certified Organic.



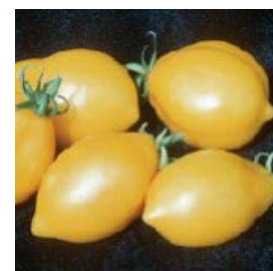
TM282-10 - Viva Italia Tomato

75 days. Solanum lycopersicum. (F1) Plant produces high yields of 3 to 4 oz deep red roma tomatoes. They have thick walls, are meaty, and very flavorful. Perfect in salads, for making paste, sauce, and salsa, tomato soup, ketchup, canning, and freezing. It sets fruit much better in hot weather than other roma varieties. Heat tolerant. Excellent choice for home gardens and market growers. Disease Resistant: V, FF, N, A, BS. Determinate.



TM462-20 - Wonder Light Tomato

78 days. Solanum lycopersicum. Open Pollinated. Plant produces excellent yields of 6 oz yellow tomatoes. They are very sweet and flavorful. These beautiful lemon shaped tomatoes are great for culinary creations. Also great for salads, salsas, tomato sauce, or a wonderful yellow ketchup. Also known as Plum Lemon Tomato. Excellent choice for home gardens. A heirloom variety from Moscow, Russia. Indeterminate. Certified Organic.





TM801-20 - Yaqui Tomato

75 days. Solanum lycopersicum. (F1) Plant produces high yields of 3 to 4 oz red plum shaped tomatoes. They are very sweet and flavorful. Perfect for salads, salsa, and making sauce, puree, and paste. This variety stands out for both the quality and quantity. Excellent choice for home gardens and market growers. Disease Resistant: V, FF, N, A. Determinate.

