

Lettuce - Looseleaf

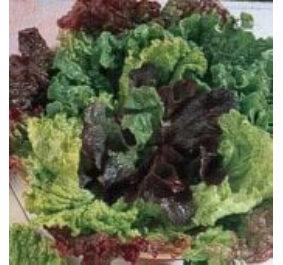
[LC26-750 - Black Seeded Simpson Lettuce Seeds](#)

45 days. Lactuca sativa. Open Pollinated. Black Seeded Simpson Lettuce. This early maturing plant produces excellent yields of leaf-type lettuce. Very flavorful and of superb quality. This is one of the most popular leaf lettuce varieties on the market. Its frilled crumpled leaves are crisp, tender, and very flavorful. The crisp leaves are perfect for salads and garnishes. Can grow as baby lettuce in 28 days. It grows best in cool weather. It withstands heat, drought, and light frost. Slow to bolt. Cold Tolerant. Heat Tolerant. Drought Tolerant. Excellent choice for home gardens. An heirloom variety dating back to 1850. United States Department of Agriculture, PI 536700. Disease Resistant: DM, LD, TB.



[LC15-750 - Bon Vivant Premium Blend Lettuce](#)

45 days. Lactuca sativa. Open Pollinated. The plant produces excellent yields of a mixture of gourmet leaf-type lettuce. The mixture contains bronze, green, and red lettuce of various sizes and shapes. Perfect for sandwiches, salads, and garnishes. An excellent choice for home gardens.



[LC55-750 - Bronze Guard Lettuce](#)

70 days. Lactuca sativa. Open Pollinated. The plant produces excellent yields of beautiful bronze/green oak leaf-type lettuce. It stays flavorful, even when other lettuce is starting to get bitter. Does well in most regions and climates. Perfect for salads, garnishes, and gourmet dishes. Excellent choice for home gardens.



[LC4-750 - Gourmet Salad Blend Lettuce Seeds](#)

70 days. Lactuca sativa. Open Pollinated. Gourmet Salad Blend Lettuce. The plant produces excellent yields of a mixture of gourmet leaf lettuce. A special blend of light green, dark green, and red lettuce. Perfect for sandwiches, salads, and garnishes. A very popular market seller blend that takes all the planning out of what to grow to satisfy your customers. Excellent choice for home gardens and specialty market growers.



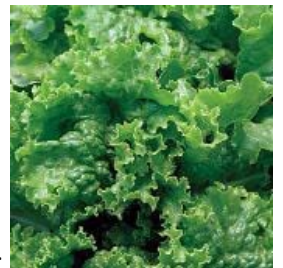
[LC28-750 - Grand Rapids Lettuce](#)

45 days. Lactuca sativa. Open Pollinated. This early maturing plant produces high yields of large bright green leaf-type lettuce. Leaves are frilled, crinkled, and crisp. Perfect for sandwiches, salads, and garnishes. This is a quick-growing variety. Heat Tolerant. Slow to bolt. Suitable for greenhouse production. Excellent choice for home gardens, greenhouses, market growers, and open field production, and hydroponics gardening. An heirloom variety dating back to 1898. United States Department of Agriculture, PI 536719. Disease Resistant: TB, V.



[LC29-750 - Green Ice Lettuce Seeds](#)

45 days. Lactuca sativa. Open Pollinated. Green Ice Lettuce. This early maturing plant produces high yields of glossy dark green loose leaf lettuce. Leaves are frilled, crinkled, and crisp. It is among the earliest, yet lasts well into summer, thanks to superior heat tolerance. Heat Tolerant. You can have multiple harvests with this variety. Slow to bolt. Perfect for salads and garnishes. Excellent choice for home gardens. An heirloom was developed by Burpee in the 1960s. United States Department of Agriculture, PI 536848.



[LC7-750 - Lollo Rosa Lettuce](#)

53 days. Lactuca sativa. Open Pollinated. This early maturing plant produces excellent yields of flavorful leaf-type lettuce. Leaves are green with frilly red edges tips. Perfect for sandwiches, salads, and garnishes. Slow to bolt. Excellent choice for home gardens and specialty market growers.



[LC63-750 - Mesclun Mix Lettuce Seeds](#)

30 days. Lactuca sativa. Open Pollinated. Mesclun Mix Lettuce. This early maturing plant produces a flavorful mixture of lettuce and tender greens. A special blend of light green, dark green, and red lettuce and greens. Perfect for salads, pasta, soups, stirfry, and garnishes. Plant indoors or out. This mix is intended to be harvested continuously for a ready supply of fresh and tender greens. Clip it with scissors and it will regrow. Suitable for hydroponics gardening. An excellent choice for home gardens.



[LC14-750 - Oak Leaf Lettuce Seeds](#)

45 days. Lactuca sativa. Open Pollinated. Oak Leaf Lettuce. This early maturing plant produces very flavorful medium dark lettuce shaped like oak leaves. As outer leaves are picked, inner leaves keep producing. Perfect for salads and garnishes. This variety stands well without bolting. Long-standing, never bitter, and does amazingly well in the summer heat. Fast growing, and regrows well after cuttings as long as it is planted in fertile soil. Non-heading plants. The easiest type of lettuce to grow. Excellent choice for home gardens. A 1771 heirloom from France that has been growing continuously since prior to the Revolutionary War! United States Department of Agriculture, PI 536751.



[LC16-750 - Red Sails Lettuce Seeds](#)

1985 All-America Selections Winner!
45 days. Lactuca sativa. Open Pollinated. Red Sails Lettuce. This early maturing plant produces excellent yields of delicately crumpled bronze-red leaf lettuce. Excellent flavor. The leaves are perfect for sandwiches, salads, and garnishes. Extremely high in vitamins. One of the slowest bolting red lettuce varieties on the market. Grows well all season but really colors up spectacularly in the fall. Excellent choice for home gardens and market growers. United States Department of Agriculture, PI 601060.



[LC33-750 - Ruby Red Lettuce Seeds](#)

1958 All-America Selections Winner!

53 days. Lactuca sativa. Open Pollinated. Ruby Red Lettuce. This early maturing plant produces good yields of red leaf lettuce. This is a very heat-tolerant variety. Slow to bolt. Color does not fade in hot weather. Perfect for salads and garnishes. Adds color to salads. Heat Tolerant. Always a great seller at Farmer's Markets! Excellent choice for home gardens. An heirloom dating back to 1958. United States Department of Agriculture, PI 536761.



[LC22-750 - Salad Bowl Green Lettuce Seeds](#)

1952 All-America Selections Winner!

44 days. Lactuca sativa. Open Pollinated. Salad Bowl Green Lettuce. This early maturing plant produces excellent yields of flavorful green leaf lettuce. As outer leaves are picked, inner leaves keep producing. Ideal for hot weather as it is slow to bolt. Perfect for salads and garnishes. Suitable for containers. Excellent choice for home gardens. An heirloom variety. United States Department of Agriculture, PI 536762.



LC23-750 - Salad Bowl Red Lettuce Seeds

44 days. Lactuca sativa. Open Pollinated. Salad Bowl Red Lettuce. This early maturing plant produces excellent yields of flavorful red leaf lettuce. As outer leaves are picked, inner leaves keep producing. Perfect for salads and garnishes. Slow to bolt. Excellent choice for home gardens. An heirloom dating back to 1955. United States Department of Agriculture, PI 536760.



LC19-750 - Simpson Elite Lettuce

45 days. Lactuca sativa. Open Pollinated. This early maturing plant produces excellent yields of flavorful leaf lettuce. The leaves are crumpled with curled outer leaves. Very attractive. One of the slowest bolting and earliest growing varieties on the market. Ideal for spring, early summer, and fall harvest. Drought Tolerant. Perfect for salads and garnishes. An excellent choice for home gardens and market growers. United States Department of Agriculture, PI 584330.



LC62-750 - Slobolt Lettuce

48 days. Lactuca sativa. Open Pollinated. This early maturing plant produces excellent yields of very flavorful lettuce. The outer leaves may be picked off as it grows. It has a delightful crispness and mild flavor and is never bitter. Grows even in hot weather! Heat-Tolerant. Slow to bolt. Suitable for greenhouse production and outdoor planting. Excellent choice for home gardens, greenhouses, market growers, and open field production. An heirloom dating back to 1946. United States Department of Agriculture, PI 536764.



LC43-750 - Tango Lettuce

45 days. Lactuca sativa. Open Pollinated. This early maturing plant produces excellent yields of dark green color leaf lettuce. It resembles Endive in appearance. This variety is rich in vitamins and has a tangy flavor. Perfect for salads and garnishes. Excellent choice for home gardens and market growers. United States Department of Agriculture, PI 667708.



LC44-750 - Waldman's Green Lettuce

50 days. Lactuca sativa. Open Pollinated. This early maturing plant produces excellent yields of light green frilled leaf lettuce. It tolerates cold weather well. Slow to bolt. Suitable for hydroponics gardening. Waldman's Green is highly productive lettuce that is the standard for commercial growing. Excellent choice for home gardens, greenhouses, market growers, and open field production. United States Department of Agriculture, PI 536769. Disease Resistant: TB.

